

SECTION
31

SCALE IN CHAINS



Township 81-North; Range 4

EAST OF THE FIFTH PRINCIPAL MERIDIAN

SCALE IN FEET



SCOTT COUNTY, IOWA
BUTLER TOWNSHIP

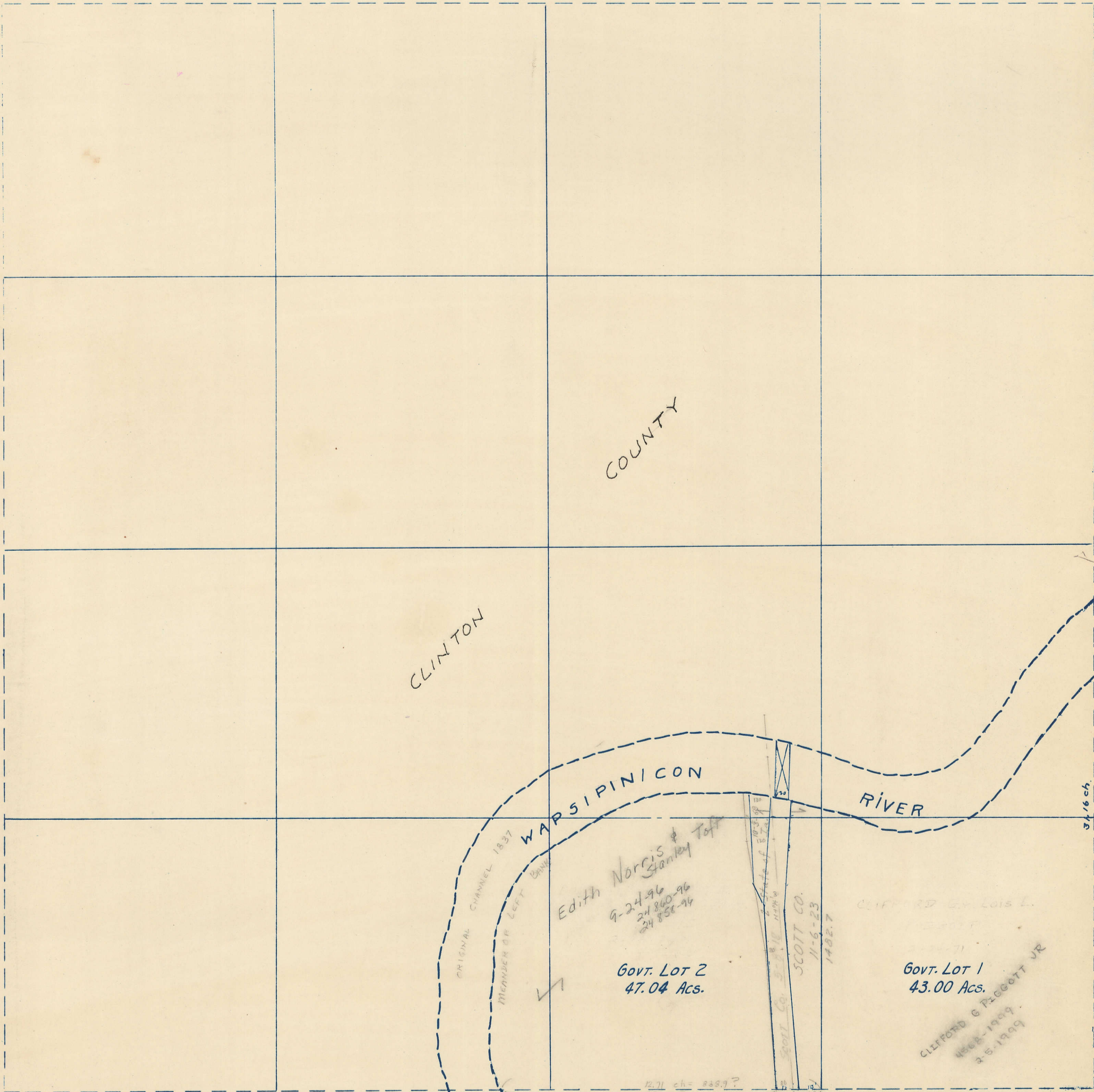
NORTH

Transfer Page 129

TWP 81-N

WEST

EAST



CLINTON

COUNTY

WAPSIPINICON RIVER

ORIGINAL CHANNEL 1837
MEANDER OR LEFT BANK

Edith Norris & Stanley Tapp
9-24-96
24860-96
24858-96

Govt. Lot 2
47.04 Acs.

SCOTT CO.
11-6-23
14027

Govt. Lot 1
43.00 Acs.

CLIFFORD G. FERGUSON JR.
1868-1909
2-6-1909

12.71 ch = 238.9?
552.07

34.16 ch.

SOUTH
SECTION 6 - T80N.