

SECTION 12

Township 80-North; Range 4

EAST OF THE FIFTH PRINCIPAL MERIDIAN

SCOTT COUNTY, IOWA

BUTLER TOWNSHIP

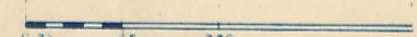
NORTH

SECTION 10

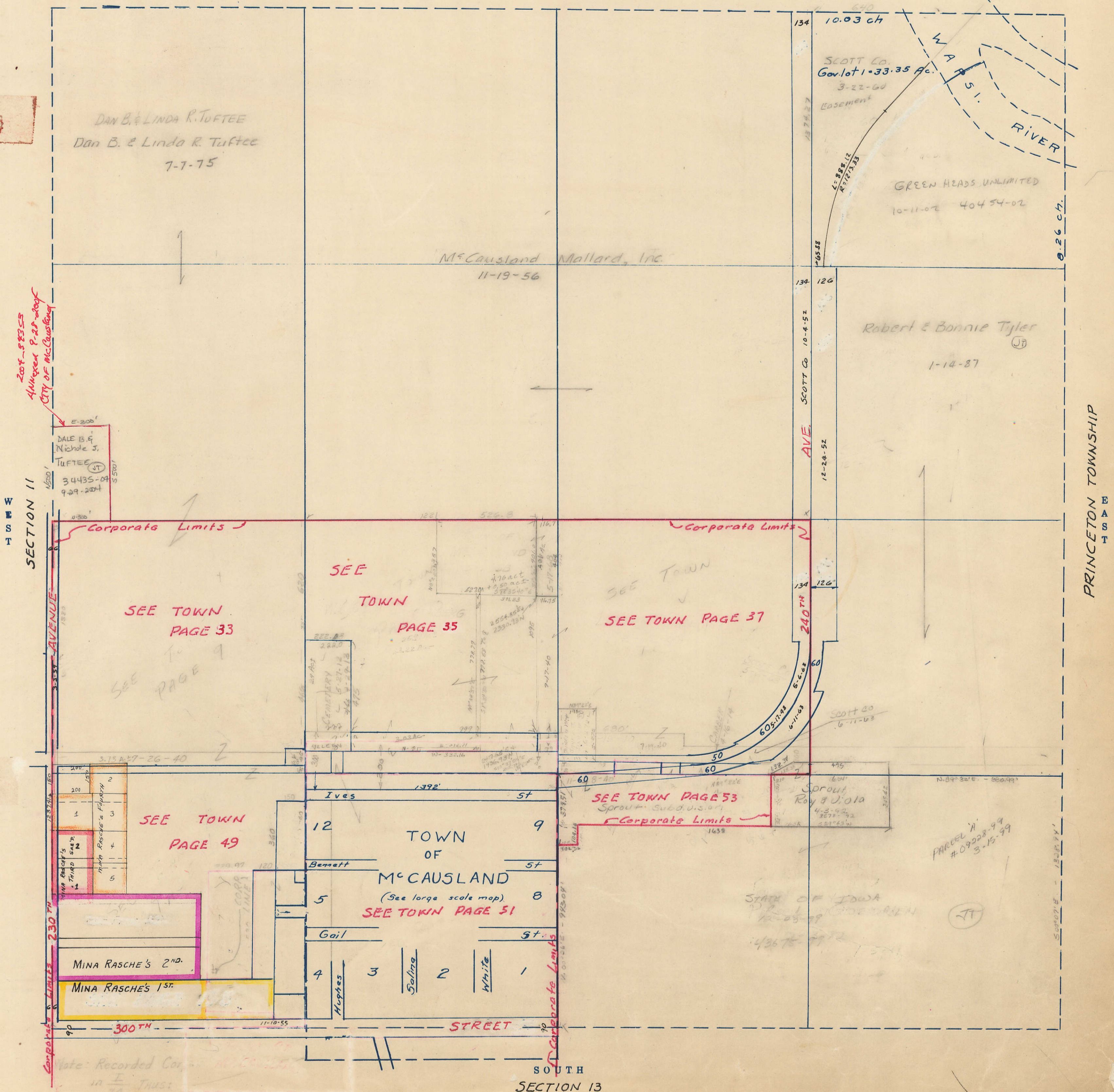
SCALE IN CHAINS



SCALE IN FEET



Transfer Page 51d-104



WEST

SECTION 11

PRINCETON TOWNSHIP EAST

SOUTH

SECTION 13

2014-88355  
Amended P. 25-2007  
CITY OF M'causland

DAN B. & LINDA R. TUFTEE  
Dan B. & Linda R. Tuftee  
7-7-75

M'causland Mallard, Inc.  
11-19-56

SCOTT Co.  
Gov. lot 1-33.35 Ac.  
3-22-60  
Easement  
GREEN HEADS UNLIMITED  
10-11-02 40454-02

Robert & Bonnie Tyler  
1-14-87

DALE B. & NICHOLE J. TUFTEE  
34435-04  
9-29-2004

SEE TOWN PAGE 33

SEE TOWN PAGE 35

SEE TOWN PAGE 37

SEE TOWN PAGE 49

TOWN OF M'CAUSLAND  
(See large scale map)  
SEE TOWN PAGE 51

SEE TOWN PAGE 53

PARCEL A  
#09028-99  
3-15-99

MINA RASCHE'S 2ND.  
MINA RASCHE'S 1ST.

Note: Recorded Copy in E. Trust