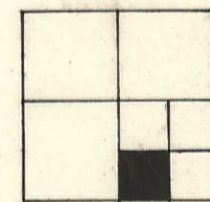
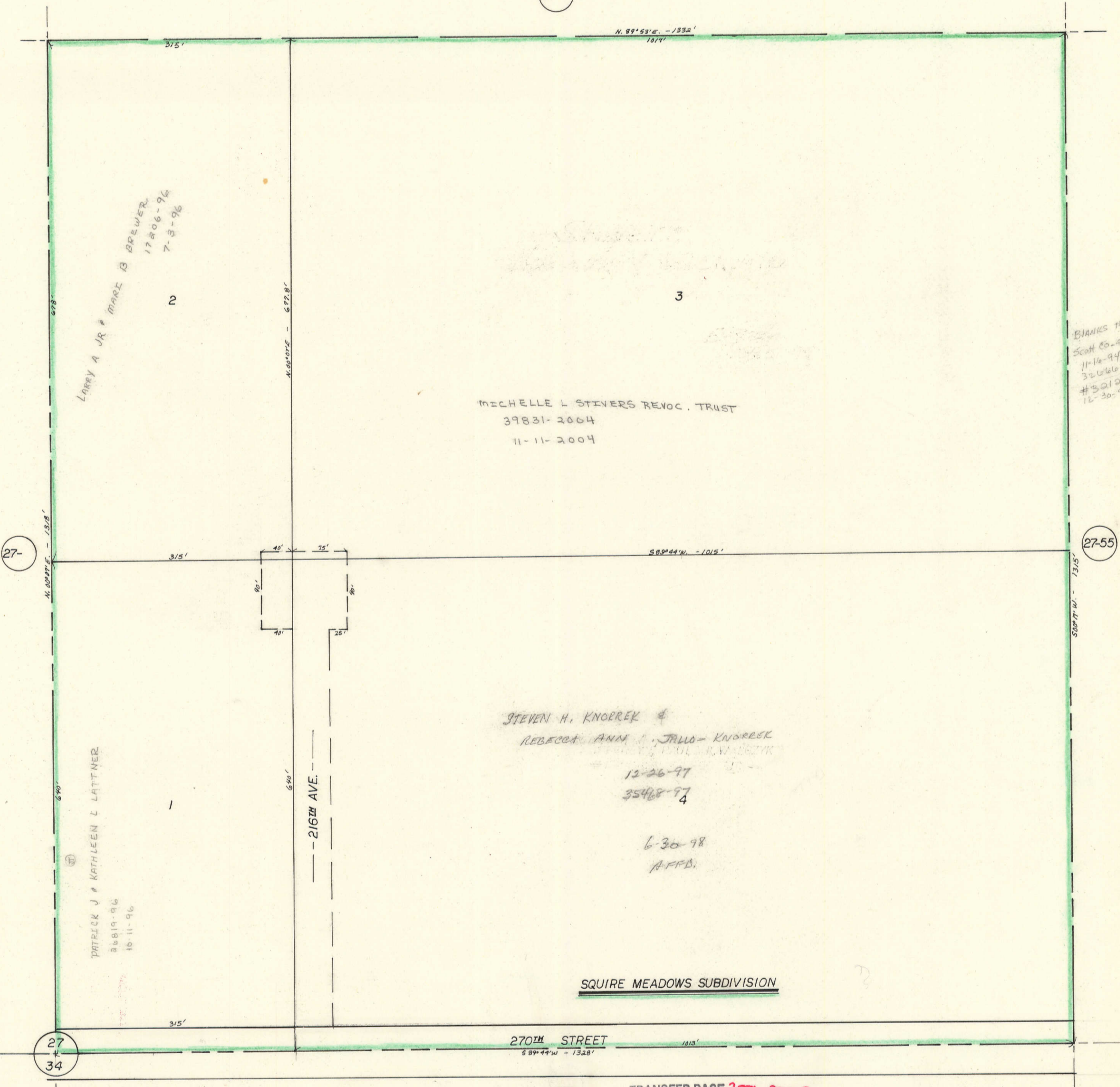


S.W.1/4, SE.1/4 SEC. 27-80-4  
BUTLER TOWNSHIP  
SCALE: 1"=100'

TRANSFER PAGE ~~1516-412~~



27-



27-

27-55

27  
34

34-

TRANSFER PAGE ~~2576-2295~~

BLANKS TO:  
Scott Co. 402. 2c.  
11-16-94  
32-616-94  
#32129-95  
12-30-95

MICHELLE L. STIVERS REVOC. TRUST  
39831-2004  
11-11-2004

STEVEN H. KNORREK &  
REBECCA ANN J. JALLO-KNORREK  
12-26-97  
35468-97  
6-30-98  
A.P.P.D.

SQUIRE MEADOWS SUBDIVISION

270TH STREET  
S. 89° 44' W. - 1328'