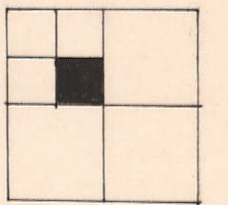
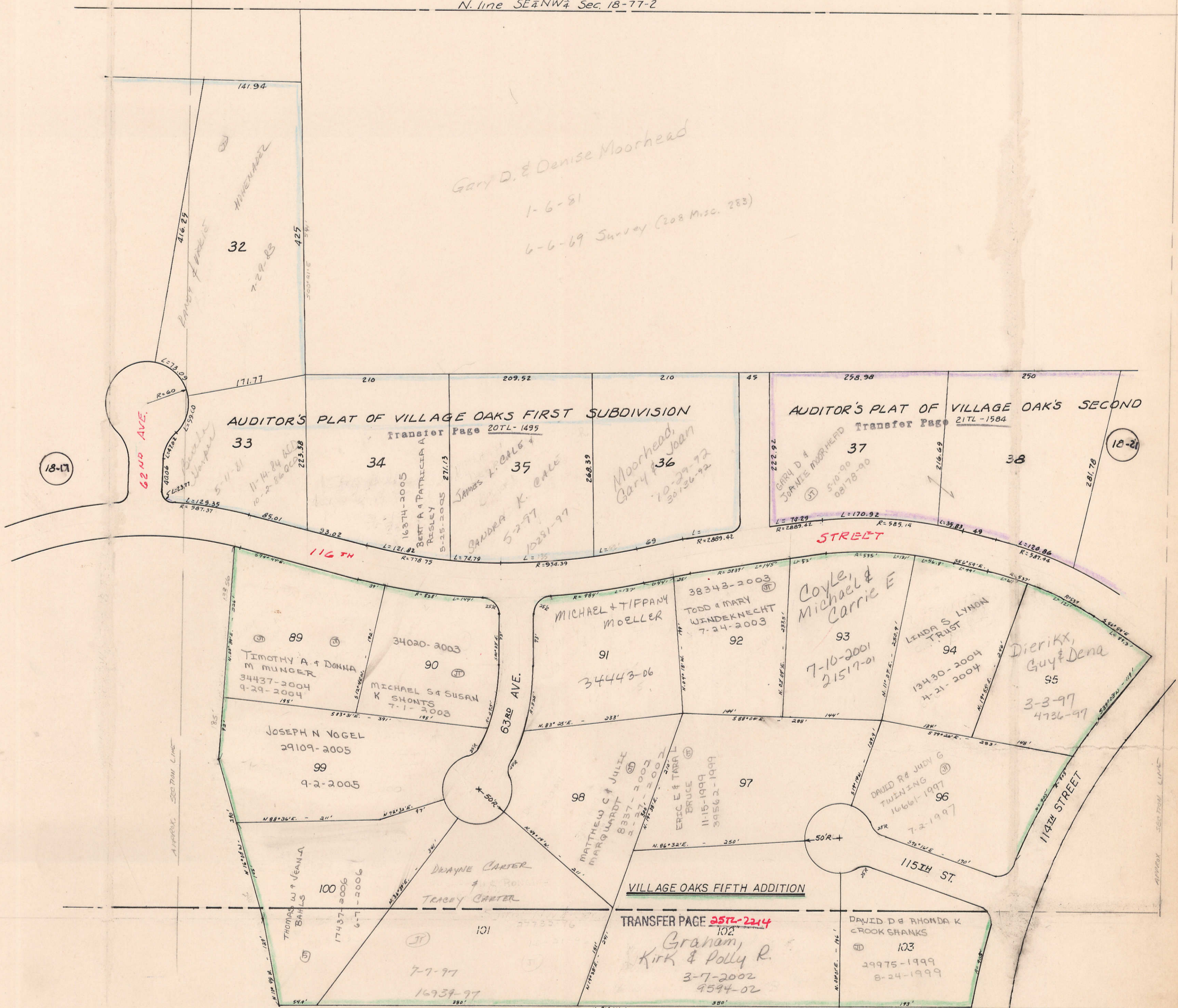


18-3

Transfer Page 9Lds-84



N. line SE 1/4 NW 1/4 Sec. 18-77-2



18-17

18-21

TRANSFER PAGE 257L-2244

Graham,  
Kirk & Polly R.  
3-7-2002  
9594-02

BLANK LOTS TO  
ROY HARPER  
# 08761-96  
4-10-96

18-35