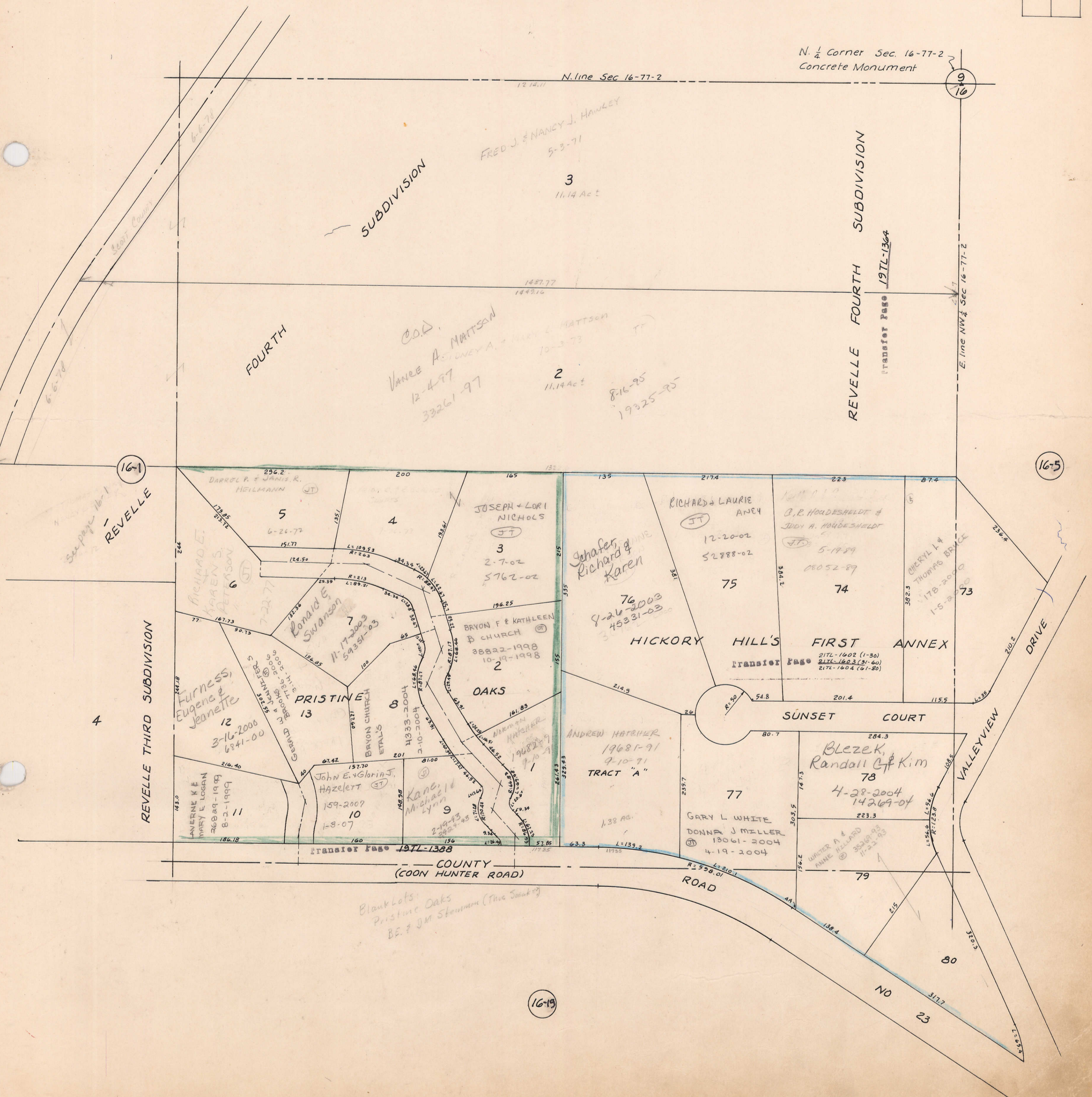
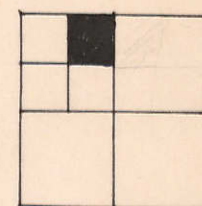


Transfer Page 5Lds-84



N. 1/4 Corner Sec. 16-77-2
 Concrete Monument

9
 10

SUBDIVISION

REVELLE FOURTH SUBDIVISION

Transfer Page 197L-1364

E. line NW 1/4 Sec 16-77-2

N. line Sec 16-77-2

FRED J. & NANCY J. HAWLEY
 5-3-71

3
 11.14 Act

FOURTH

C.O.D.
 VANCE A. MATTSO
 12-4-97
 33261-97

2
 11.14 Act

8-16-95
 19325-95

16-1

REVELLE

16-5

REVELLE THIRD SUBDIVISION

DRIVE

HICKORY HILL'S FIRST ANNEX

Transfer Page 217L-1602 (1-30)
 217L-1603 (31-60)
 217L-1604 (61-90)

SUNSET COURT

Blezek, Randall & Kim
 78
 4-28-2004
 14269-04

GARY L WHITE
 DONNA J MILLER
 13061-2004
 4-19-2004

COUNTY
 (COON HUNTER ROAD)

Blank Lots:
 Pristine Oaks
 BE & JM Stamm (This Sunk?)

16-19