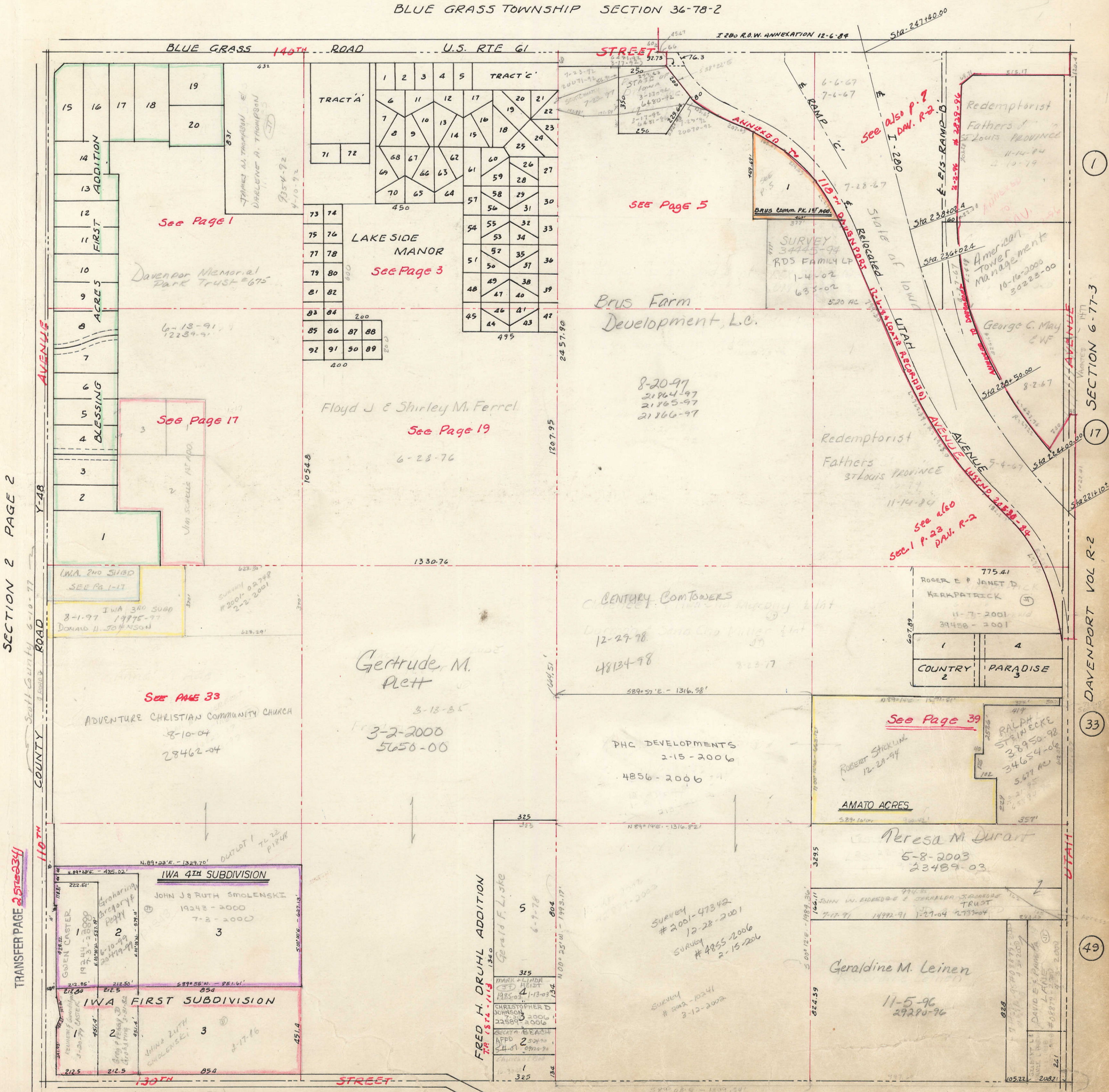


SECTION 1
TOWNSHIP 77 NORTH, RANGE 2 EAST
OF THE FIFTH PRINCIPAL MERIDIAN
BUFFALO TOWNSHIP
SCOTT COUNTY, IOWA

SCALE: 1 inch = 330 feet

TRANSFER PAGE 69

BLUE GRASS TOWNSHIP SECTION 36-78-2



SECTION 2 PAGE 2

Scott County 6-10-77

TRANSFER PAGE 257-234

TRANSFER PAGE 227-1848

SECTION 12 PAGE 12

SECTION 6-77-3

17

DAVENPORT VOL R-2

33

49