

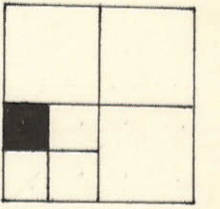
NW 1/4 SW 1/4 SEC 6-77-2
BUFFALO TOWNSHIP
SCALE: 1" = 100'

6-33

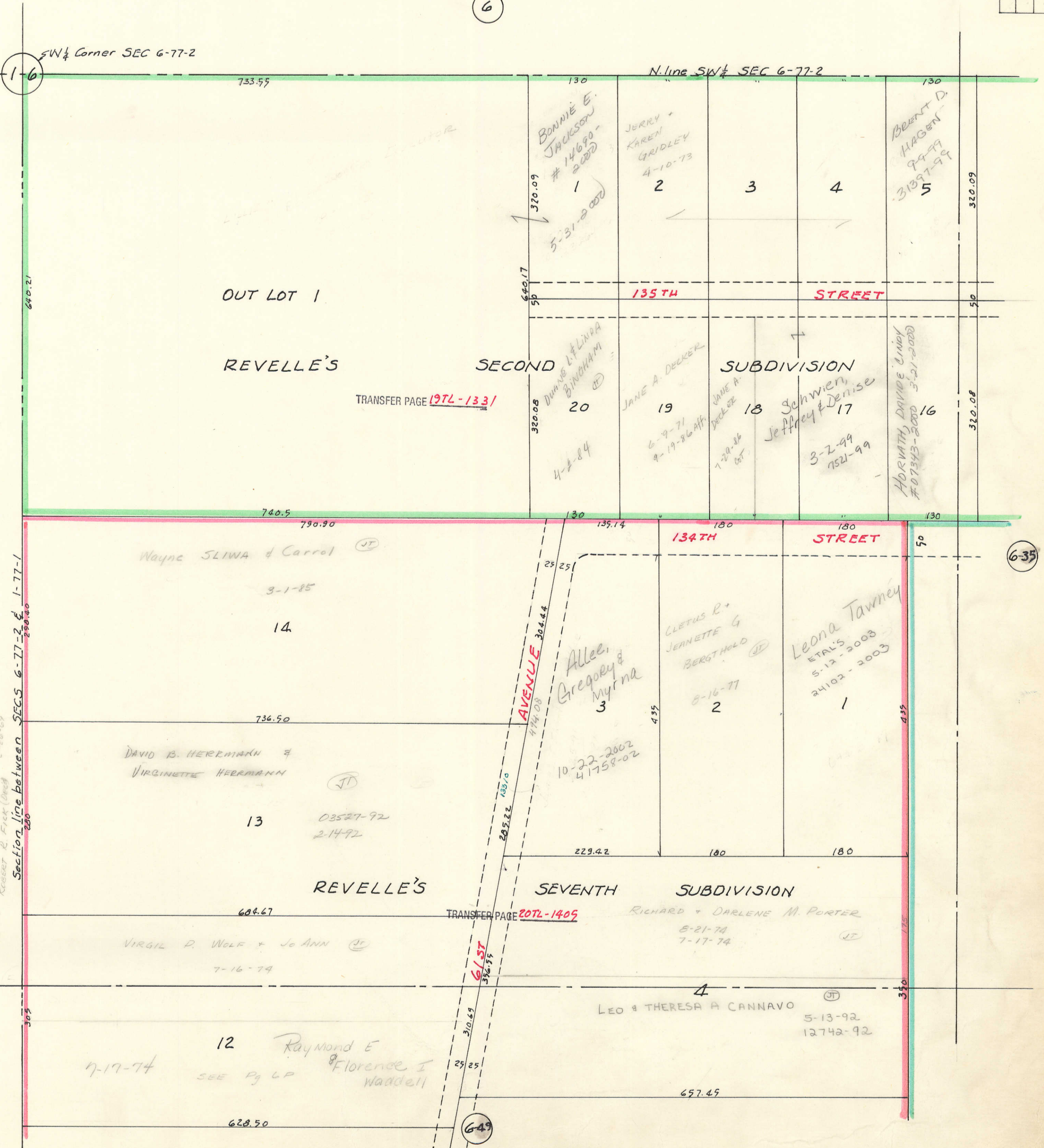
TRANSFER PAGE 51ds-74

SECTION 6

(6)



SECTION 1-77-1 MUSCATINE COUNTY



(6-35)

(6-49)

1-6

SW 1/4 Corner SEC 6-77-2