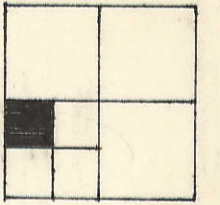


CITY OF WALCOTT

NW 1/4, SW 1/4 SEC. 31-79-2
SCALE: 1" = 100



8 17

36-31

45 45

NE 1/4 SEC 36

SEC. 36

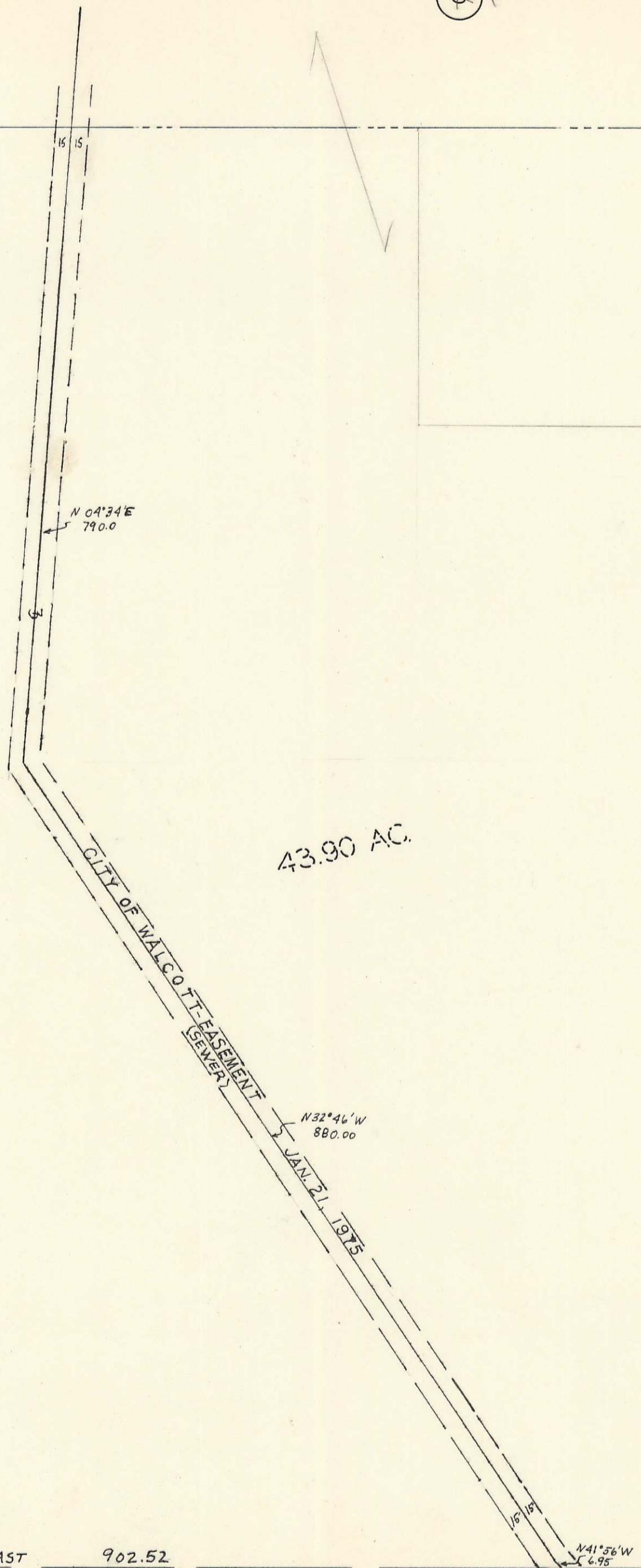
3-29-57

SCOTT CO. 2-8-57

CLEONA TOWNSHIP

45 45

EAST 902.52



43.90 AC.

CITY OF WALCOTT EASEMENT
(GENERAL)

N 32° 46' W
880.00

JAN. 21. 1975

N 41° 56' W
6.95

16 49

HICKORY GROVE TOWNSHIP NE 1/4 SW 1/4 SEC. 31