

CITY OF WALCOTT
NW 1/4 , NW 1/4 SEC. 8-78-2
SCALE: 1"=100'

40
16

SEC. 5

MEMORIAL ROAD EAST

SEC. 7

7

Corporation Limits

BLUE GRASS TO WALCOTT ROAD

2-26-73

Scott Co. 9-23-58

Scott Co. 9-10-58

Corporation Limits

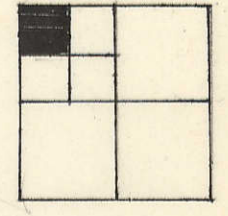
2-26-73

WEST 2677.58

N 89° 32' W - 2675.95'

28924-2005
9-1-2005

Survey # 2002-41589
10-21-2002

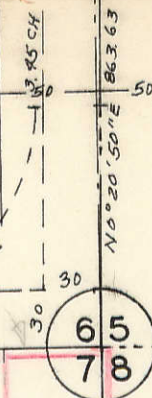


3

SEE BLUE GRASS TOWNSHIP SEC 8

BLUE GRASS TOWNSHIP

SW 1/4 NW 1/4 SEC. 8



Scott Co.
8-12-5-17-48

11.96 CH.

R=92

R=92

N 89° 32' W - 305.31

50

50

100

33.33

33.33