

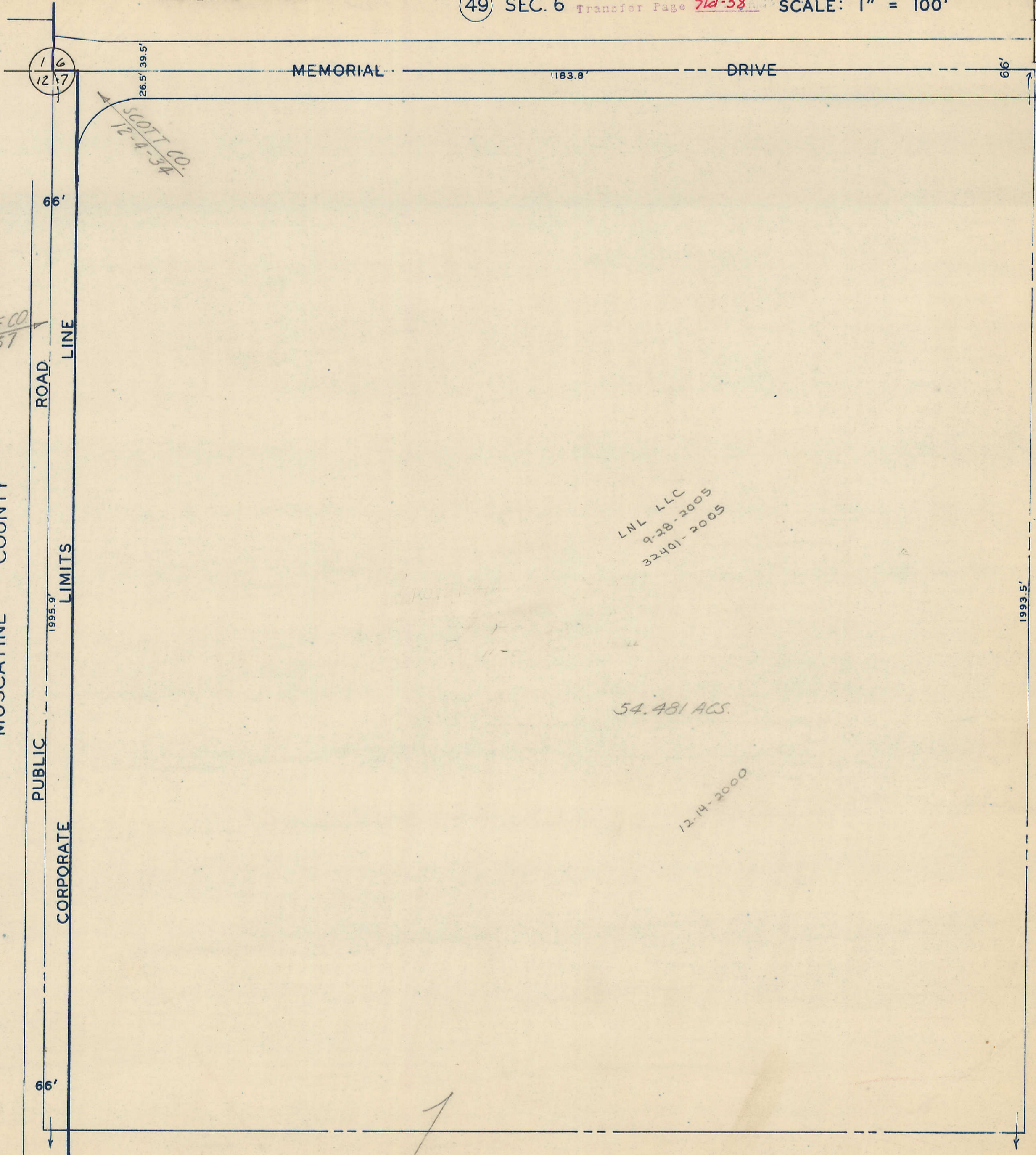
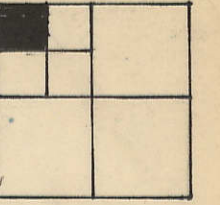
ANNEX 6-17-63

49 SEC. 6 Transfer Page 51d-38

N.W. 1/4 N.W. 1/4 SEC. 7-78-2 1

CITY OF WALCOTT

SCALE: 1" = 100'



FULTON TWP.
MUSCATINE COUNTY

PUBLIC

CORPORATE

ROAD

LINE

LIMITS

LNL LLC
9-28-2005
32401-2005

54.481 ACS.

12-14-2000

17

3