

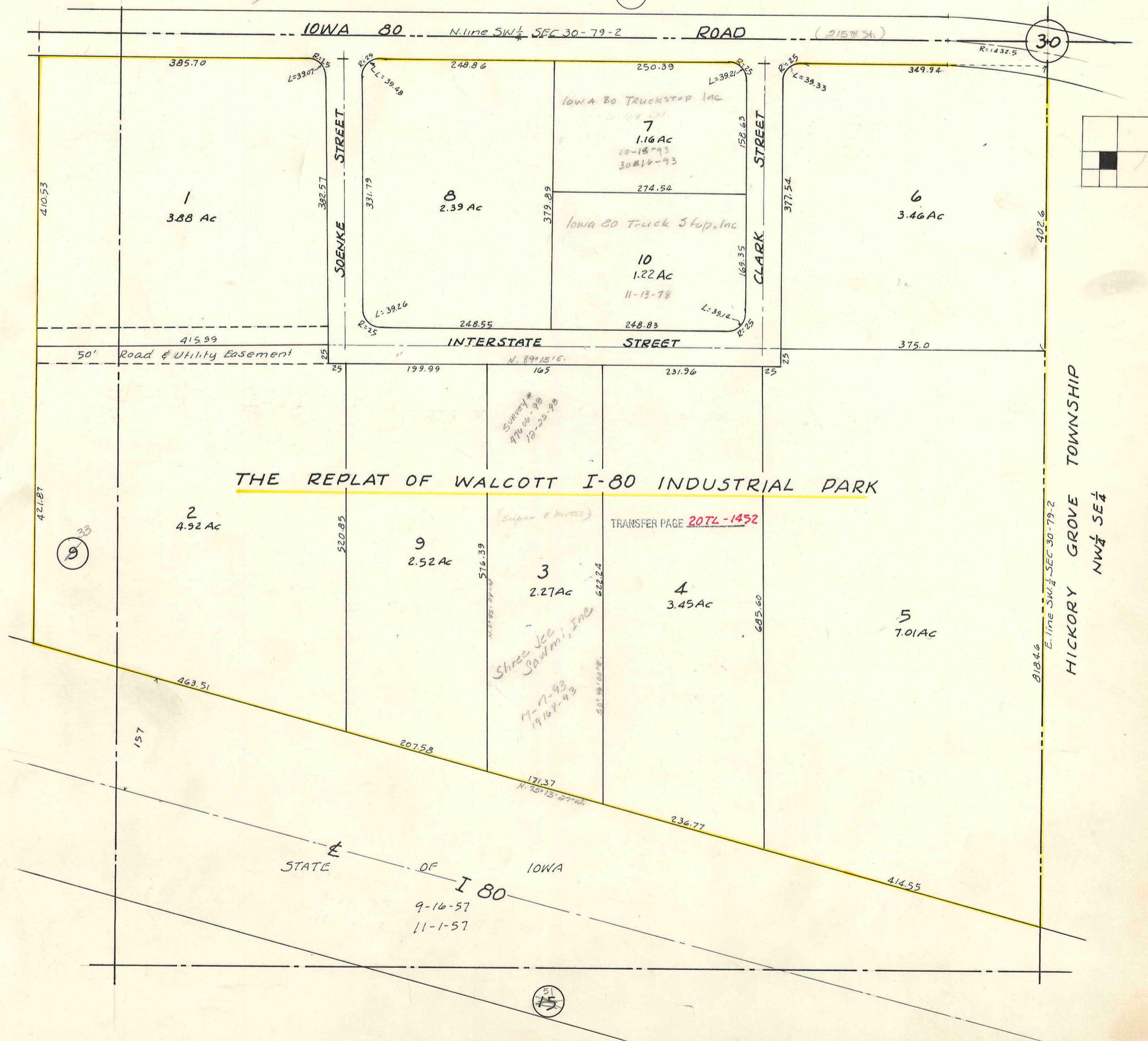
Vacants Lots to
IOWA 80 TRUCKSTOP, INC
11-6-92
31188-92

HICKORY GROVE TOWNSHIP
SE 1/4 NW 1/4

9

NE 1/4 SW 1/4 SEC 30-79-2
CITY OF WALCOTT
SCALE: 1 in. = 100 ft

TRANSFER PAGE 7166-251



THE REPLAT OF WALCOTT I-80 INDUSTRIAL PARK

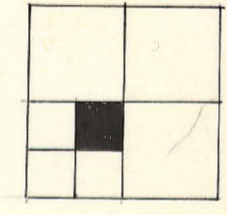
TRANSFER PAGE 207L-1452

Shree Jee
Sawmi, Inc
7-7-93
19162-93

Survey #
47606-98
12-22-98

STATE OF IOWA
9-16-57
11-1-57

HICKORY GROVE TOWNSHIP
NW 1/4 SE 1/4



33
9

15