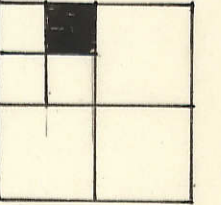


TRANSFER FROM 714-345

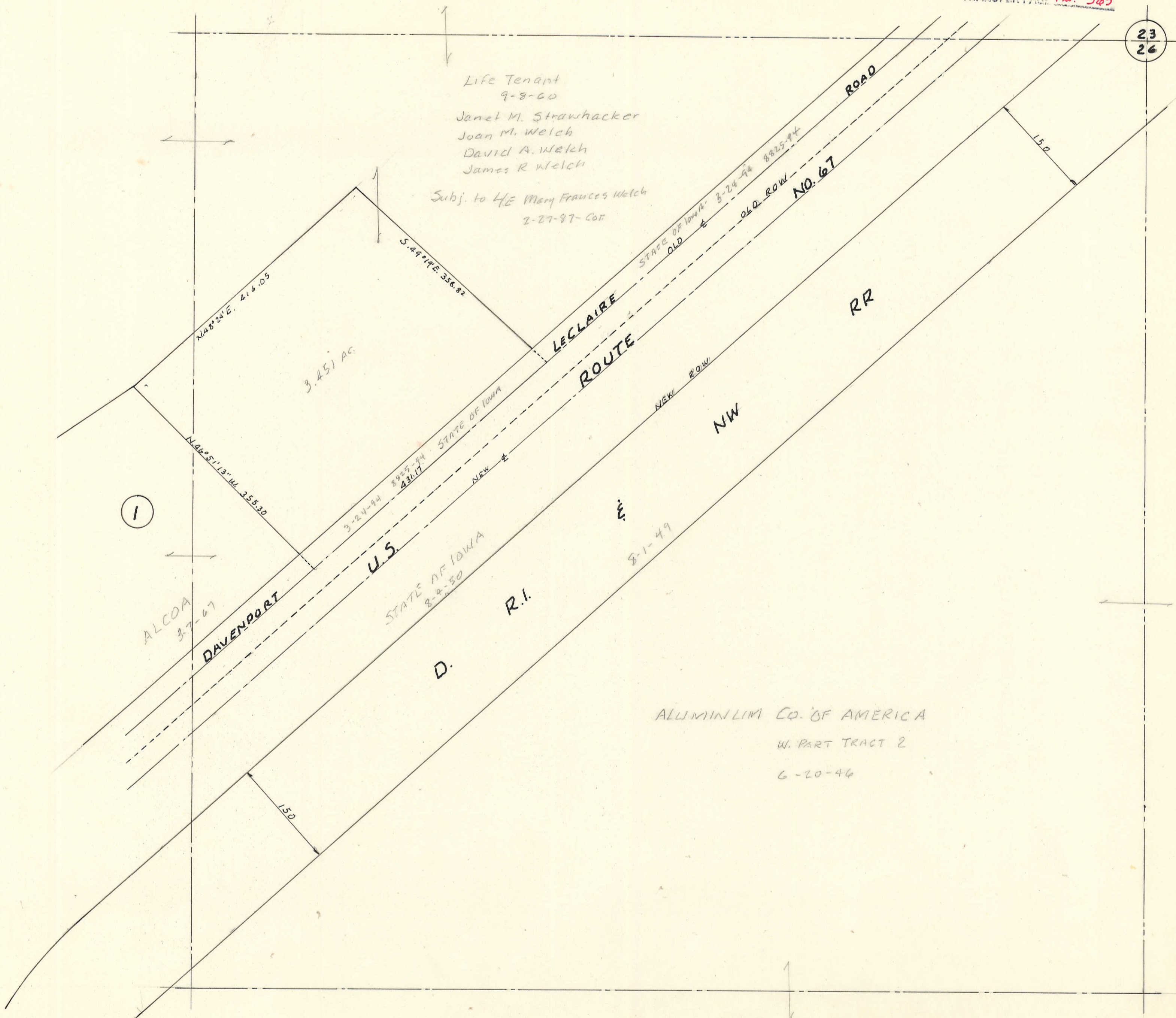
23
26

Life Tenant
9-8-60
Janet M. Strawhacker
Joan M. Welch
David A. Welch
James R. Welch
Subj. to HE Mary Frances Welch
2-27-87-Cor



1

5



ALCOA
3-7-67

DAVENPORT

3.45 AC.

U.S.

D.

R.I.

NW

RR

LECLAIRE
ROUTE

NO. 67

ALUMINUM CO. OF AMERICA
W. PART TRACT 2
6-20-46