

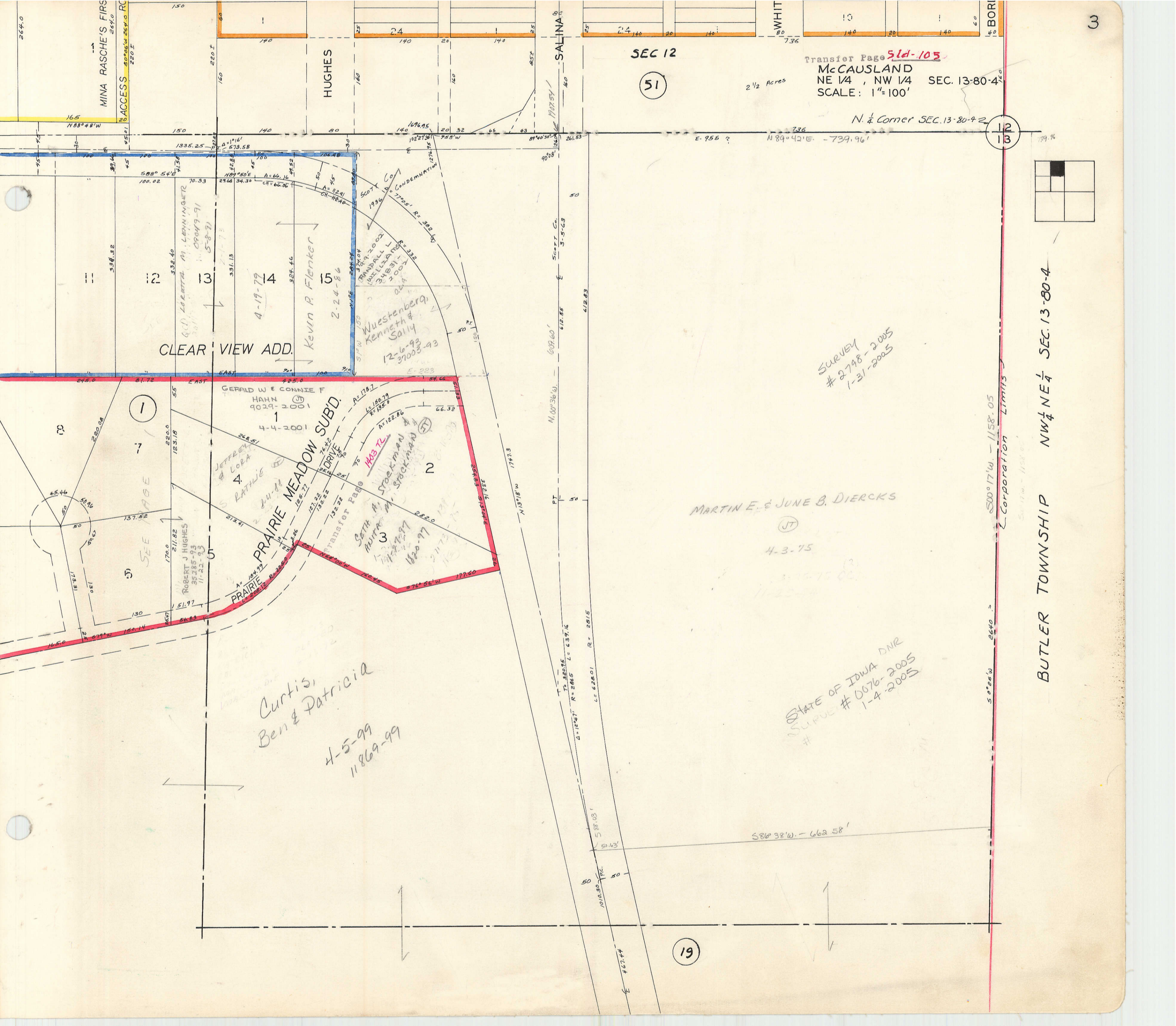
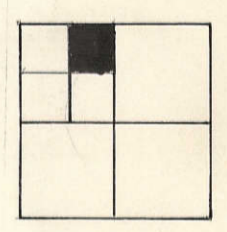
SEC 12

51

Transfer Page 51d-105
McCAUSLAND
NE 1/4, NW 1/4 SEC. 13-80-4
SCALE: 1"=100'

N. 1/4 Corner SEC. 13-80-4

12
13



CLEAR VIEW ADD.

PRAIRIE MEADOW SUBD.
PRAIRIE DRIVE

SEE PAGE 7

Curtis,
Ben & Patricia
4-5-99
11869-99

Wuestenberg,
Kenneth &
Sally
12-6-93
37003-93

Kevin R. Flenker
2-24-86

M. L. LEVININGER
4-19-79

GERALD W & CONNIE F
HAHN
9029-2001
4-4-2001

JEFFREY
& LORA
RATHIE
2-4-88

ROBERT J HUGHES
35285-93
11-22-93

Transfer Page
Seth A. Stockman
Walter W. Stockman
4-27-97
4-27-97

Survey
2798-2005
1-31-2005

MARTIN E. & JUNE B. DIERCKS
(JT)
4-3-75

STATE OF IOWA DNR
SURVEY # 0076-2005
1-4-2005

500' 17" W. - 1158'. 05
L Corporation Limits

BUTLER TOWNSHIP NW 1/4 NE 1/4 SEC. 13-80-4

19