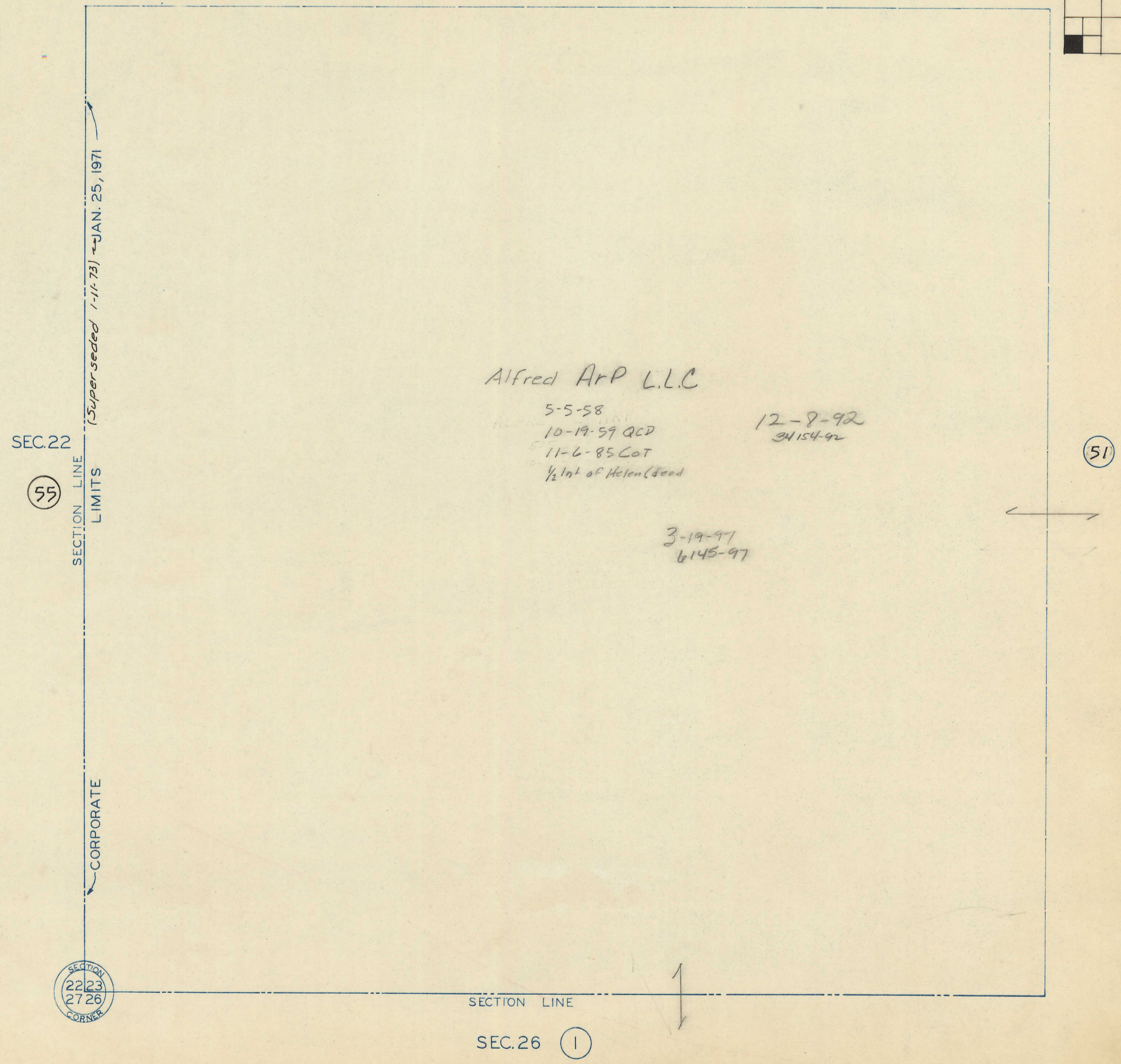
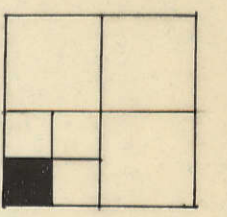


SW 1/4 SW 1/4 SEC. 23-79-3
CITY OF ELDRIDGE
SCALE: 1" = 100'

was 23 P

33



SEC. 22

55

SECTION LINE
LIMITS

(Superseded 1-11-73) → JAN. 25, 1971

CORPORATE

SECTION
22 23
27 26
CORNER

SECTION LINE

SEC. 26

1

51