

37

53

TRANSFER PAGE 8-LDS-446

ROAD W. Line SE 1/4 SEC 22-79-3

BUTTERMILK

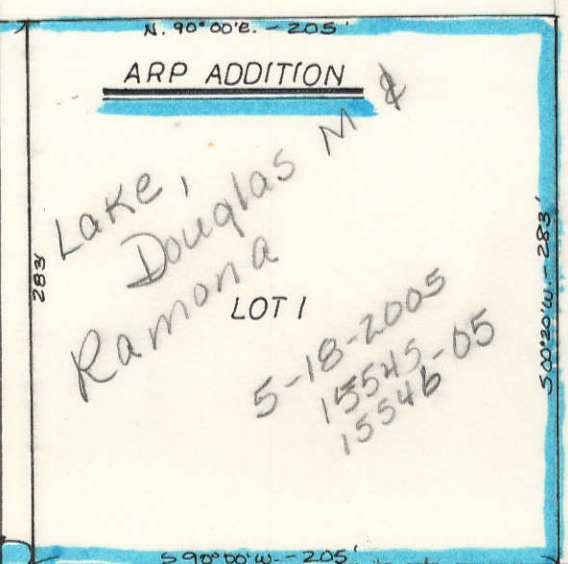
51

55

22
27

Corporate Limits
11-4-75

Corporate Limits
11-4-75



5/4 Corner SEC 22-79-3

SEC 27

SHERIDAN TOWNSHIP

20 AC

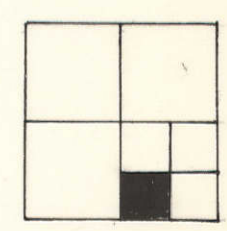
10 AC

MERLE E. ARP &
ARDELLE B. KRAFT
10-9-97
27573-97

MERLE E. ARP &
ARDELLE B. KRAFT
7453-1997
4-2-1997

Elmer J. & Norma Arp

Elmer J. & Norma Arp
5-5-52



Section line between SECS 22 & 27