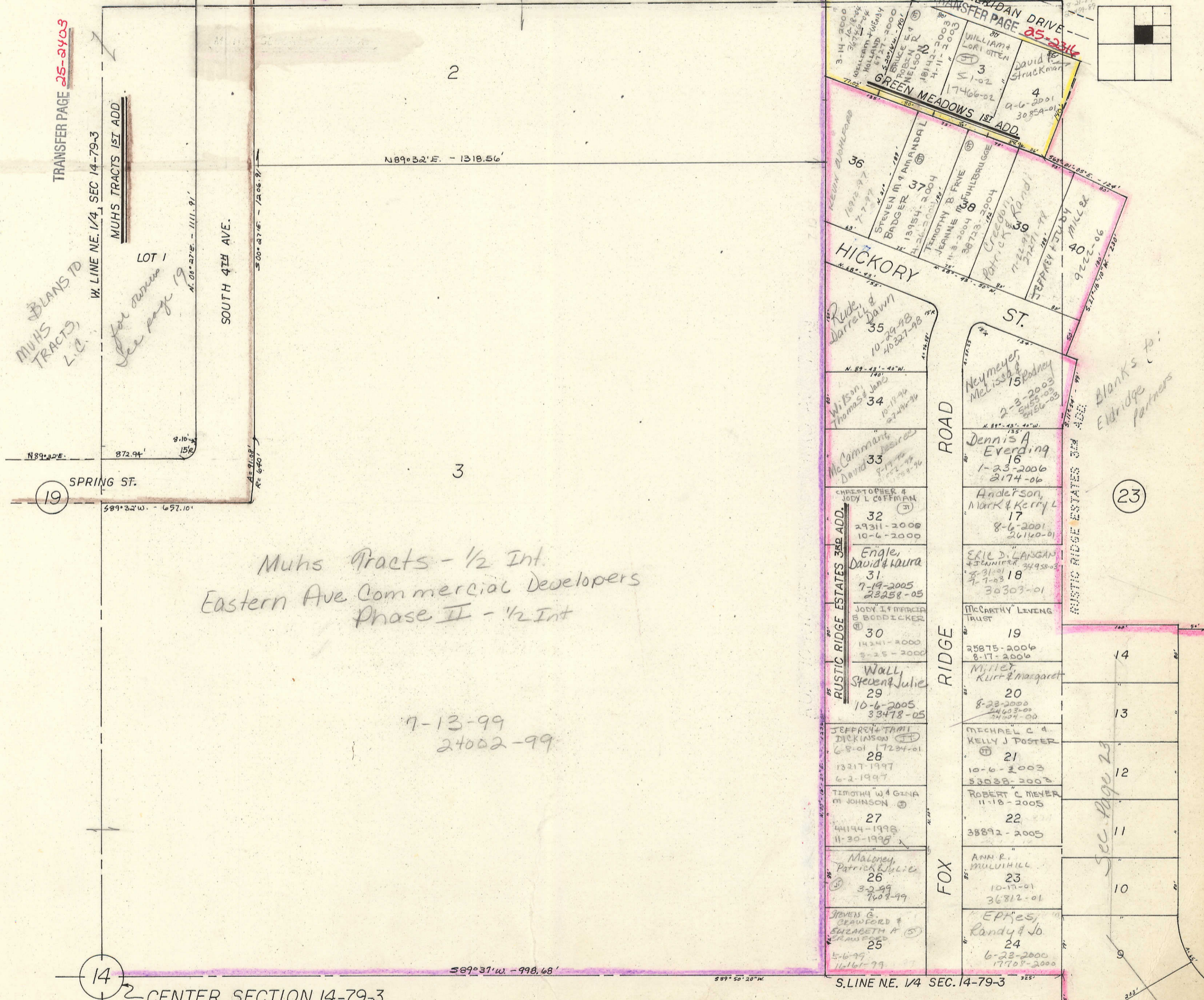


TRANSFER PAGE 81ds-438

TRANSFER PAGE 25-2342

TRANSFER PAGE 25-3403



BLANKS TO
MUHS TRACTS, L.C.
for owner
See page 19

Muhs Tracts - 1/2 Int.
Eastern Ave Commercial Developers
Phase II - 1/2 Int

7-13-99
24022-99

Blanks to:
Eldridge Partners

CENTER SECTION 14-79-3

TRANSFER PAGE 24TL-2186