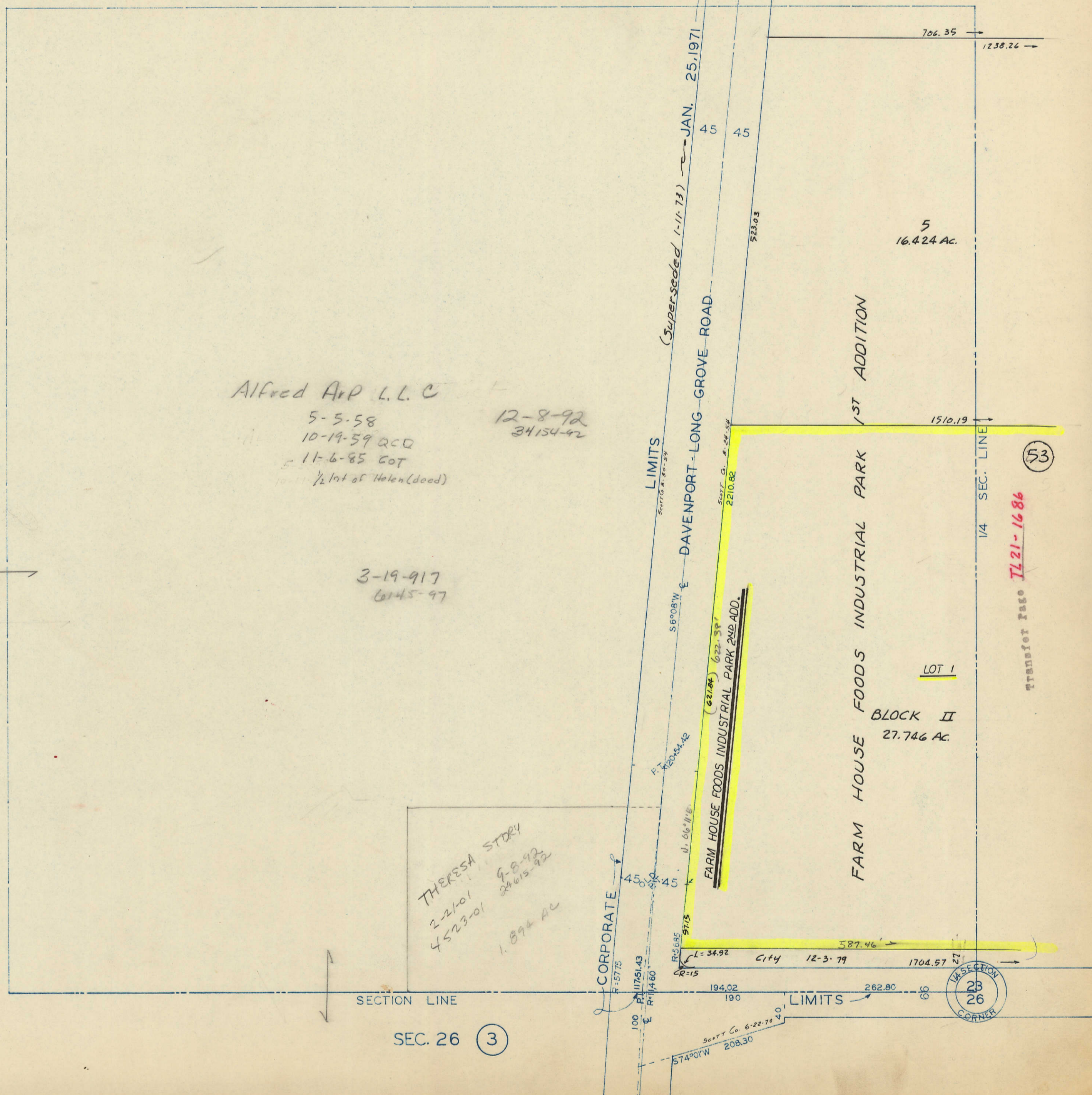


35

51

49



Alfred Arp L.L.C

5-5-58
10-19-59 QCD
11-6-85 COT
10-11-1/2 Int of Helen (deed)

12-8-92
34154-92

3-19-917
6145-97

Theresa Story
2-21-01
4523-01
9-8-92
24615-92
1.894 AC

Transfer Page TL 21-1686

SEC. 26 3

1/4 SECTION
23
26
CORNER