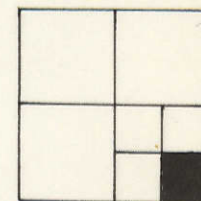


TRANSFER PAGE 86DS447



PEETERS-MURPHY PARTNERSHIP

1-15-04

1473-04

ELDRIDGE, MISSOURI

1-20-04

Faint handwritten notes and signatures, including "EVERETT NICKLAUS" and "1-20-04".

53

C. M.

ST. P.

RY.

RECORDS
#1261
7-27-89

CRABELL RESID-MURK

6-1-9

40-06/19/1

136'

NICKLAUS FIRST ADDITION

TRANSFER PAGE 237L-1923

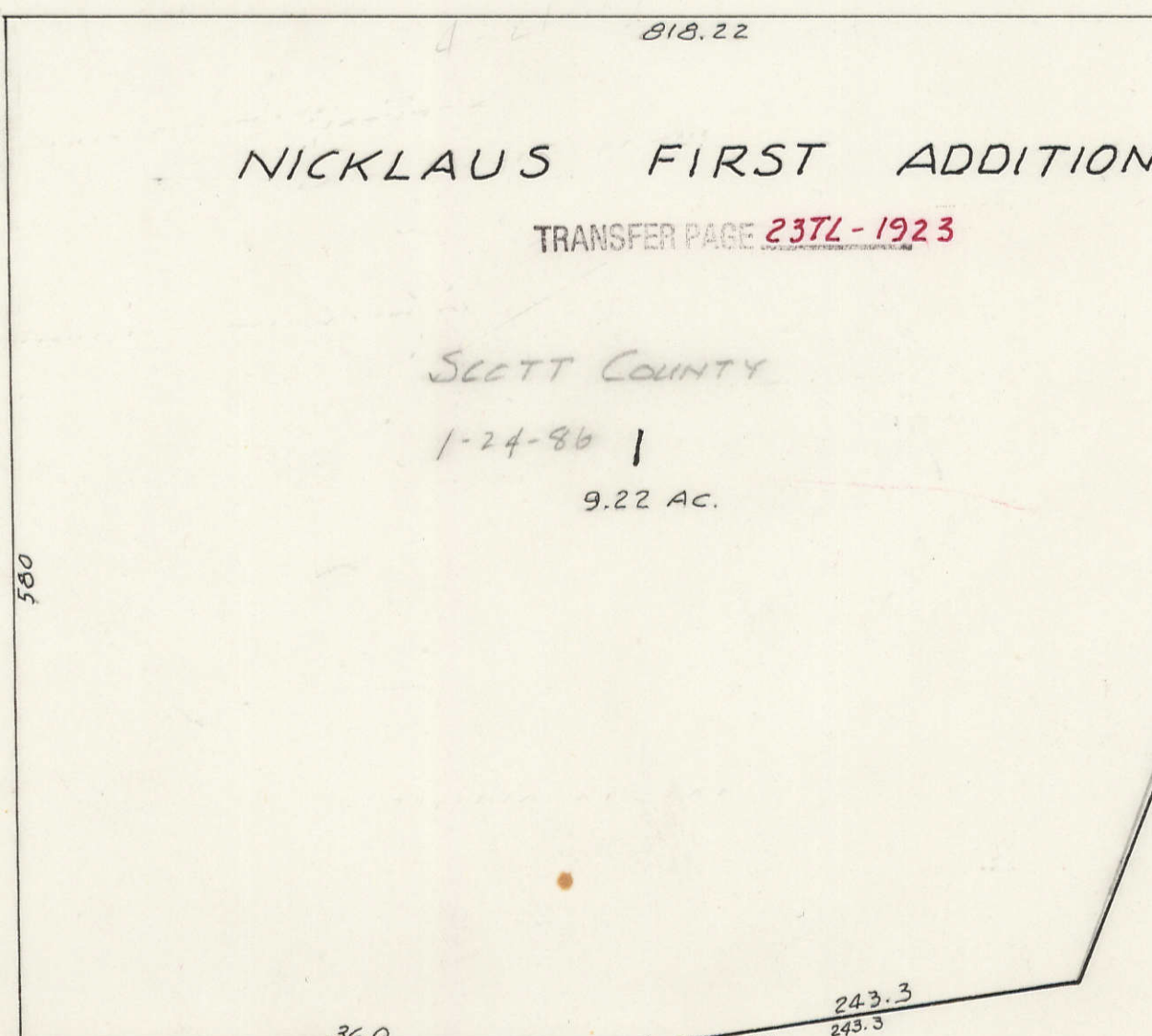
SCOTT COUNTY

1-24-86

9.22 AC.

SEC 24

49



HIGHWAY 561

BLACKHAWK TRAIL
Section line between SECS 23 & 24

SE Corner SEC 23-79-3
2324
2625

SEC 26

7