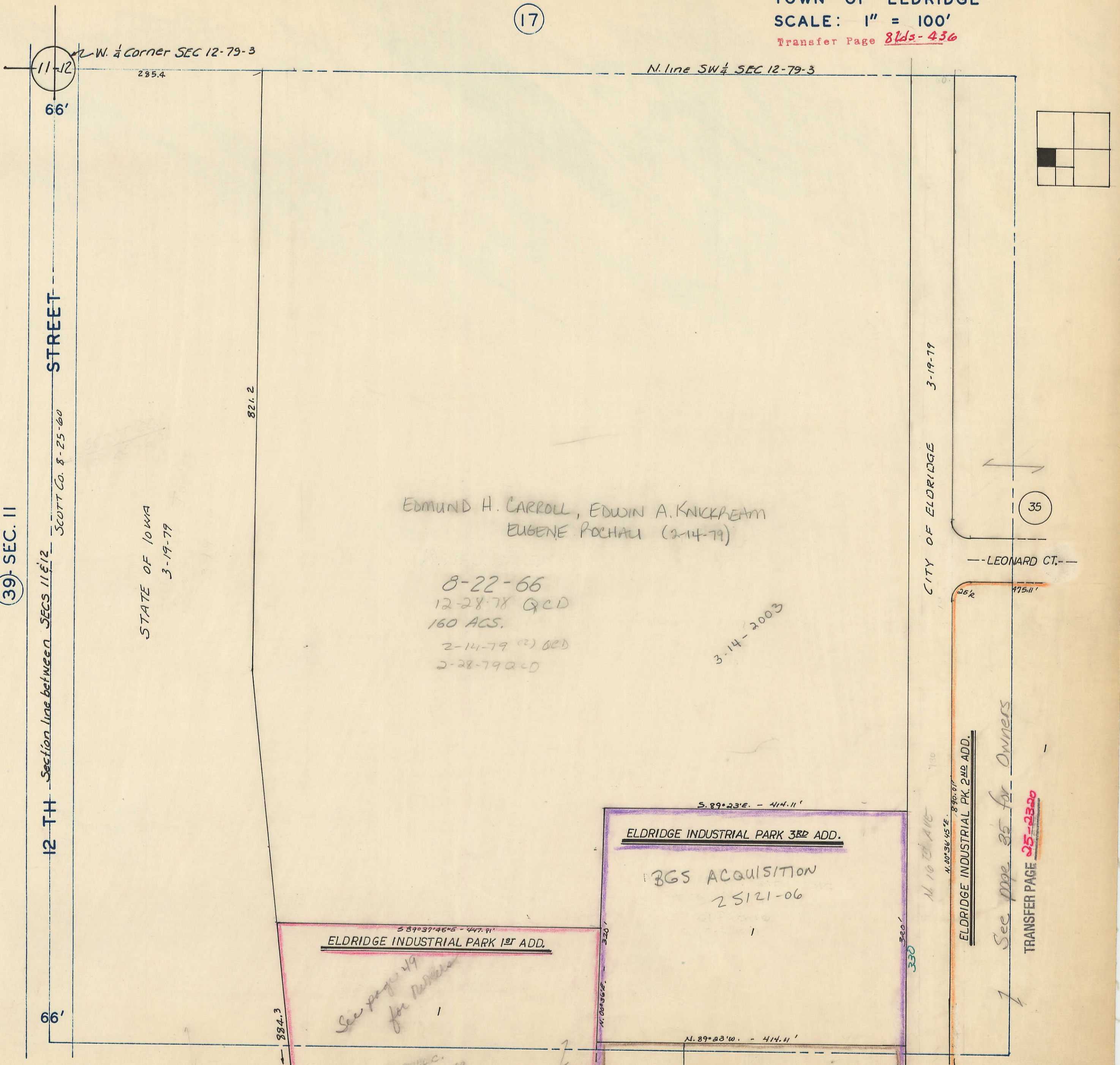


17



39- SEC. 11

12 TH STREET

Section line between SECS 11 & 12
SCOTT Co. 8-25-60

11-12

66'

66'

W. 1/4 Corner SEC 12-79-3
285.4

N. line SW 1/4 SEC 12-79-3

STATE OF IOWA
3-19-79

821.2

EDMUND H. CARROLL, EDWIN A. KNICKHEAM
EUGENE POCHAU (2-14-79)

8-22-66
12-28-78 QCD
160 ACS.
2-14-79 (2) QCD
2-28-79 QCD

3-14-2003

CITY OF ELDRIDGE 3-19-79

35

LEONARD CT.

ELDRIDGE INDUSTRIAL PARK 3RD ADD.

BGS ACQUISITION
25121-06

ELDRIDGE INDUSTRIAL PARK 1ST ADD.

See page 49 for Owners

ELDRIDGE INDUSTRIAL PK. 2ND ADD.

See page 35 for Owners

TRANSFER PAGE 25-2320

BLANKS TO
ELDRIDGE IND. DEVIC. 2.
9-26-97 26022-99

TRANSFER PAGE 25-2376

49

