

(21)

Center SEC 21-79-3

N. line SE 1/4 SEC 21-79-3

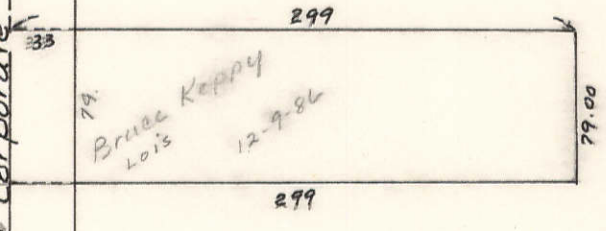
21

Corporate Limits 1-11-73-7

SHERIDAN TOWNSHIP

N. line SE 1/4 SEC 21-79-3

66



Imogene C. Keppy

9-4-84

12-9-86 Q.C.D.

11-21-2000  
33969-00

(39)

N. 89° 15' W. - 394.50'

KEPPY'S 1ST ADD.

KEVIN + PATRICIA McCLUNG

(ST)

1-28-02

1

4032-02

SURVEY  
#41527-05  
12-2-2005

N. 00° 00' E. - 361.50'

TRANSFER PAGE 25-2437

(53)

