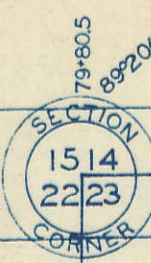


SEC. 14 (49)
VOLUME B

Transfer Page 8ld-447
NW 1/4 NW 1/4 SEC. 23-79-3
CITY OF ELDRIDGE
SCALE: 1"=100'

1
WIS 23A
142.65



33 33

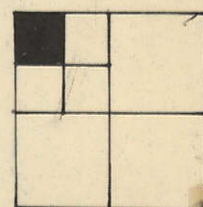
LINCOLN

1329.35
SECTION LINE ROAD

33 33

LIMITS

SCOTT Co. 5-11-57



SEC. 22

(7)

SECTION LINE
LIMITS (Super-sected 1-11-73)

JAN. 25, 1971

CORPORATE

W. W. LOWELL C. HOFFMAN
4-26-91
07967-91
Tr. 1

(3)

(17)

SEC 23-79-3