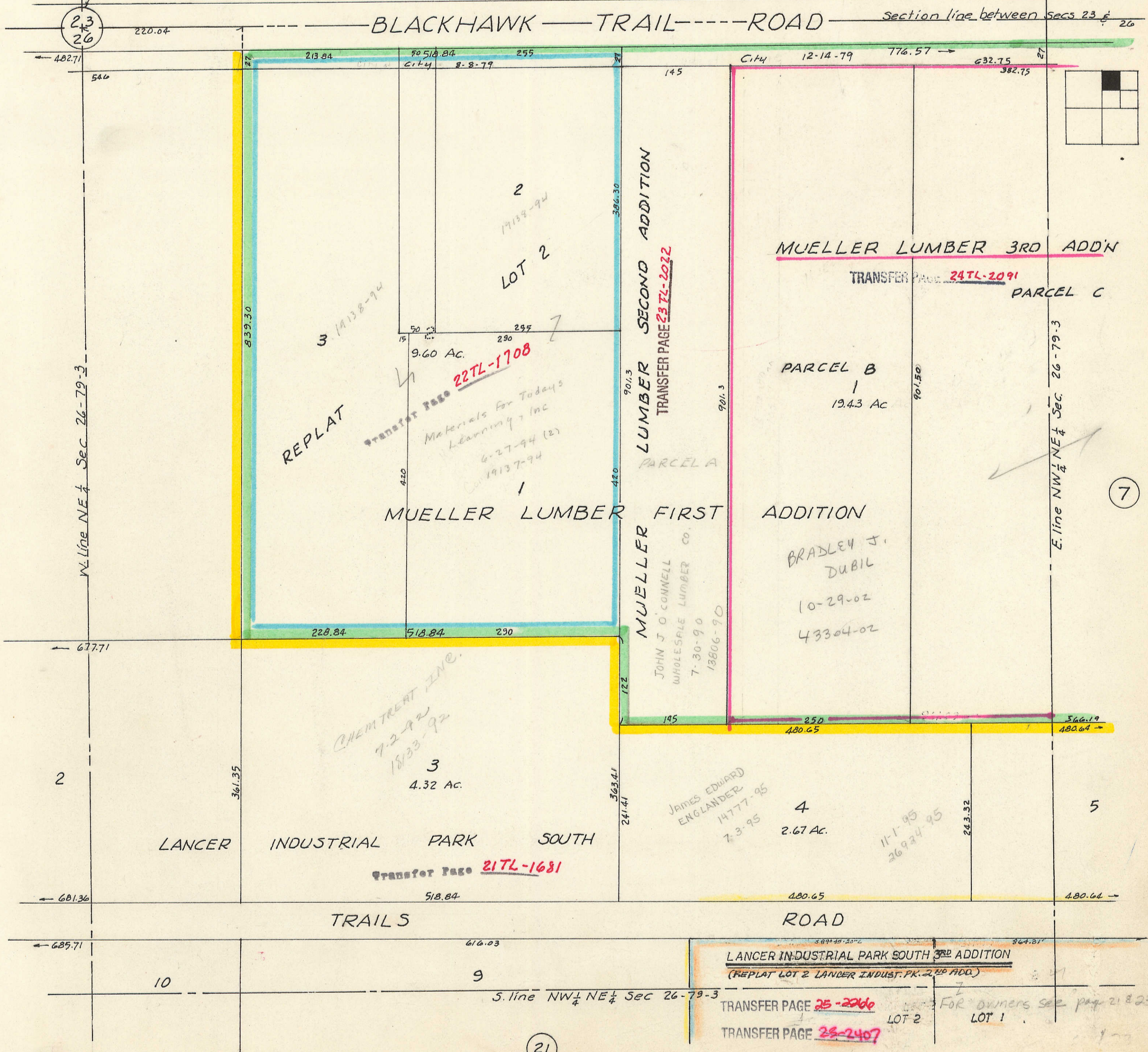


TRANSFER PAGE 81.05-450

N 1/4 Corner Sec 26-79-3



23
26

BLACKHAWK TRAIL ROAD

Section line between Secs 23 & 26

402.71

220.04

546

859.30

213.84

50518.84
City 8-8-79

255

City 12-14-79

776.57

632.75

382.75

2
19138-94
LOT 2

REPLAT
3 19138-94

9.60 AC.

22TL-1708

Materials For Today's
Learning, Inc
6-27-94 (2)
19137-94

MUeller LUMBER FIRST ADDITION

MUeller LUMBER 3RD ADD'N

TRANSFER PAGE 24TL-2091

PARCEL C

PARCEL B

19.43 AC

PARCEL A

MUeller
JOHN J O'CONNELL
WHOLESALE LUMBER CO.
7-30-90
13806-90

BRADLEY J.
DUBIL
10-29-02
43304-02

E. line NW 1/4 NE 1/4 Sec. 26-79-3

W. line NE 1/4 Sec 26-79-3

3

7

677.71

CHEMTREAT INC.
7-2-92
1833-92

4.32 AC.

TRANSFER PAGE 21TL-1681

LANCER INDUSTRIAL PARK SOUTH

JAMES EDWARD
ENGLANDER
14777-95
7-3-95

2.67 AC.

11-1-95
26934-95

2

5

681.36

518.84

480.65

480.64

TRAILS ROAD

ROAD

685.71

616.03

3874.20

364.21

LANCER INDUSTRIAL PARK SOUTH 3RD ADDITION
(REPLAT LOT 2 LANCER INDUST. PK. 2RD ADD.)

TRANSFER PAGE 25-2266

TRANSFER PAGE 23-2407

For owners see page 21 & 23
LOT 2
LOT 1

S. line NW 1/4 NE 1/4 Sec 26-79-3

21