

SEC 15

53

VOL B

TRANSFER PAGE 81d-446

NW 1/4 NE 1/4 SEC 22-79-3

CITY OF ELDRIDGE

SCALE: 1" = 100'

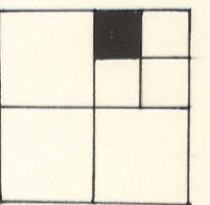
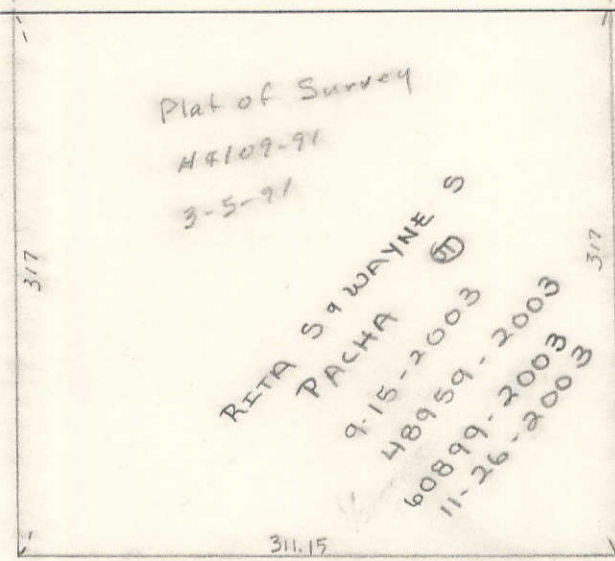
5

15  
22

N 1/2 Corner SEC 22-79-3

Scott Co. 6-21-57

Section line between SECS 15 & 22



ROAD

BUTTERMILK  
W. line NE 1/4 SEC 22-79-3

3

7

DARRELL D. COLE  
5-6-88 cot  
7084-88

21