

SEC 13

(51)

VOLUME B TRANSFER PAGE ~~8105449~~

NE 1/4 NW 1/4 SEC 24-79-3

CITY OF ELDRIDGE

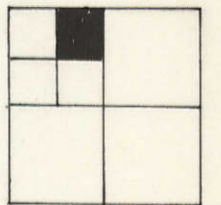
SCALE: 1" = 100'

3

Section line between SECS 13 & 24

N 1/4 Corner SEC 24-79-3 2

13
24



Vernon Kuhl L/E

4-29-81

8-15-84

8-18-86 Und 1/2 Int

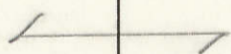
CORA HERMANN

CRAIG HERMANN

7-27-04

26545-04

(1)

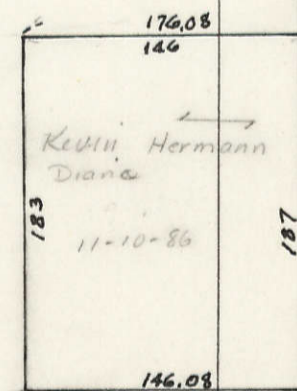


1094.67

U.S. ROUTE 61

(5)

E. line NW 1/4 SEC 24-79-3



(19)