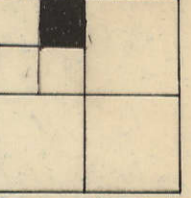


SEC. 14 (51)
VOLUME B

NE 1/4 NW 1/4 SEC. 23-79-3
CITY OF ELDRIDGE
SCALE: 1" = 100'

Was 23B



CORPORATE

BLAIR'S

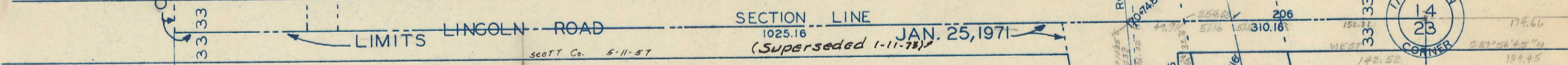
142.65 33

LIMITS LINCOLN ROAD

SECTION LINE

JAN. 25, 1971

1/4 SECTION
14
23
CORNER



SCOTT COUNTY
READY-MIX, INC.
11-9-73

Tr 4
10 Ac ±

LOWELL C. HOFFMANN
9-16-88

73.14
ACRES.

LOWELL C. HOFFMAN
4-26-91
Tr 1
07967-91

WILLIAM N + BARBARA A. KUHLE
20384-2004
8-10-2004

AMERICAN LEGION 1ST ADDITION
TRANSFER PAGE 23-1872

LIMITS LONG GROVE ROAD

CORPORATE

DAVENPORT

1/4 SEC. LINE

(5)

(1)

(19)

