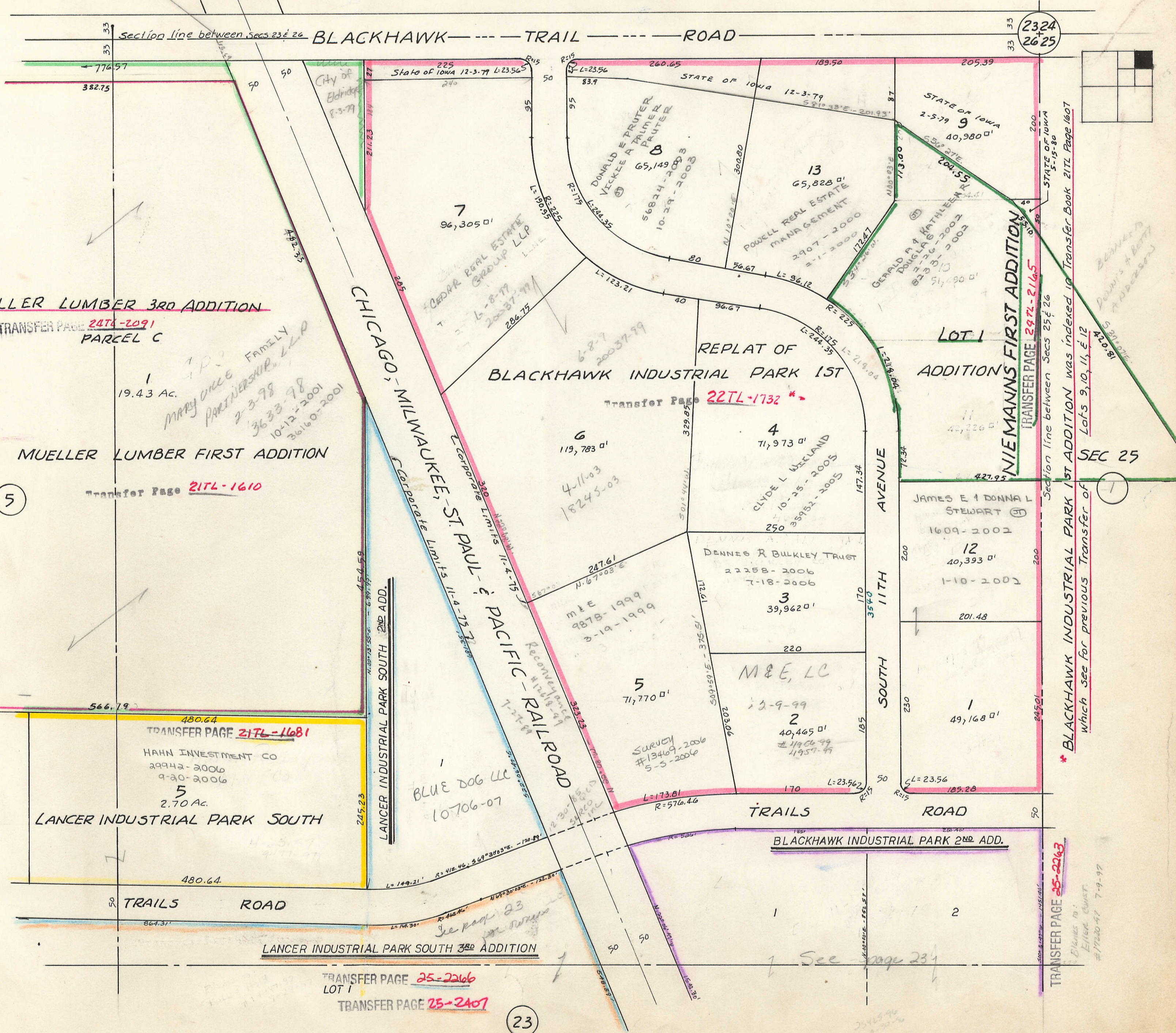


Transfer Page 81d-450



MUELLER LUMBER 3RD ADDITION

TRANSFER PAGE 2474-2091
PARCEL C

MARY ANNCE FAMILY PARTNERSHIP, LLP
2-3-98
3633-98
10-12-2001
36160-2001

MUELLER LUMBER FIRST ADDITION

TRANSFER PAGE 2176-1610

5

TRANSFER PAGE 2176-1681

HAHN INVESTMENT CO
29942-2006
9-20-2006
5
2.70 AC.

LANCER INDUSTRIAL PARK SOUTH

TRAILS ROAD

LANCER INDUSTRIAL PARK SOUTH 3RD ADDITION

TRANSFER PAGE 25-2266
LOT 1

TRANSFER PAGE 25-2407

23

2324
2625

NIEMANN'S FIRST ADDITION
TRANSFER PAGE 2972-2165

Section line between Secs 25 & 26
BLACKHAWK INDUSTRIAL PARK 1ST ADDITION was indexed in Transfer Book 217L Page 1607
Lots 9, 10, 11, & 12
which see for previous Transfer of

TRANSFER PAGE 25-2263

Plans to:
Elmer Christ
#17220-47 7-9-97