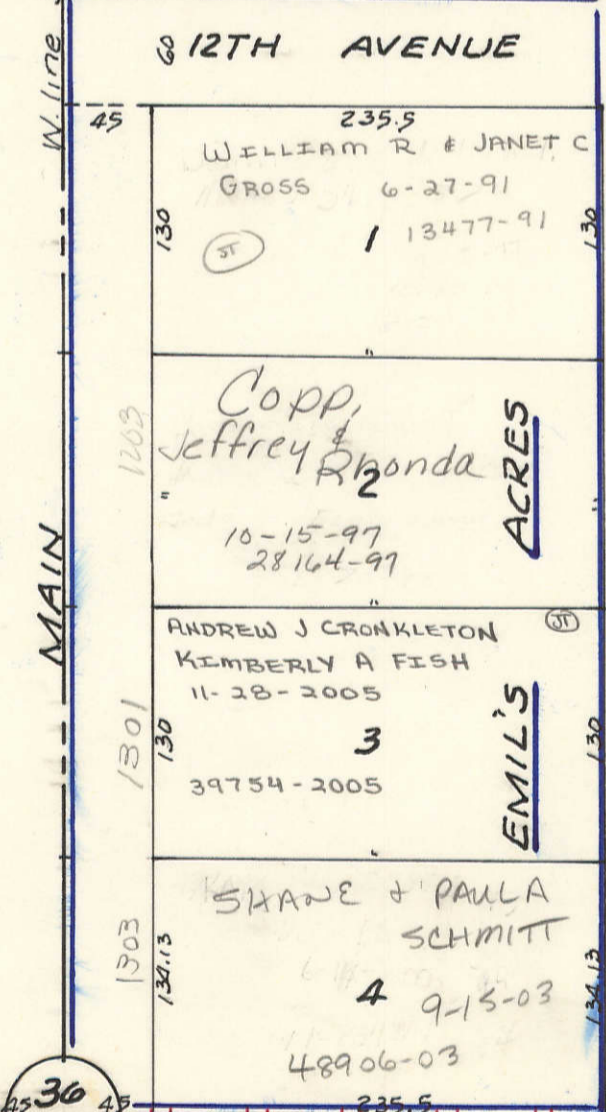
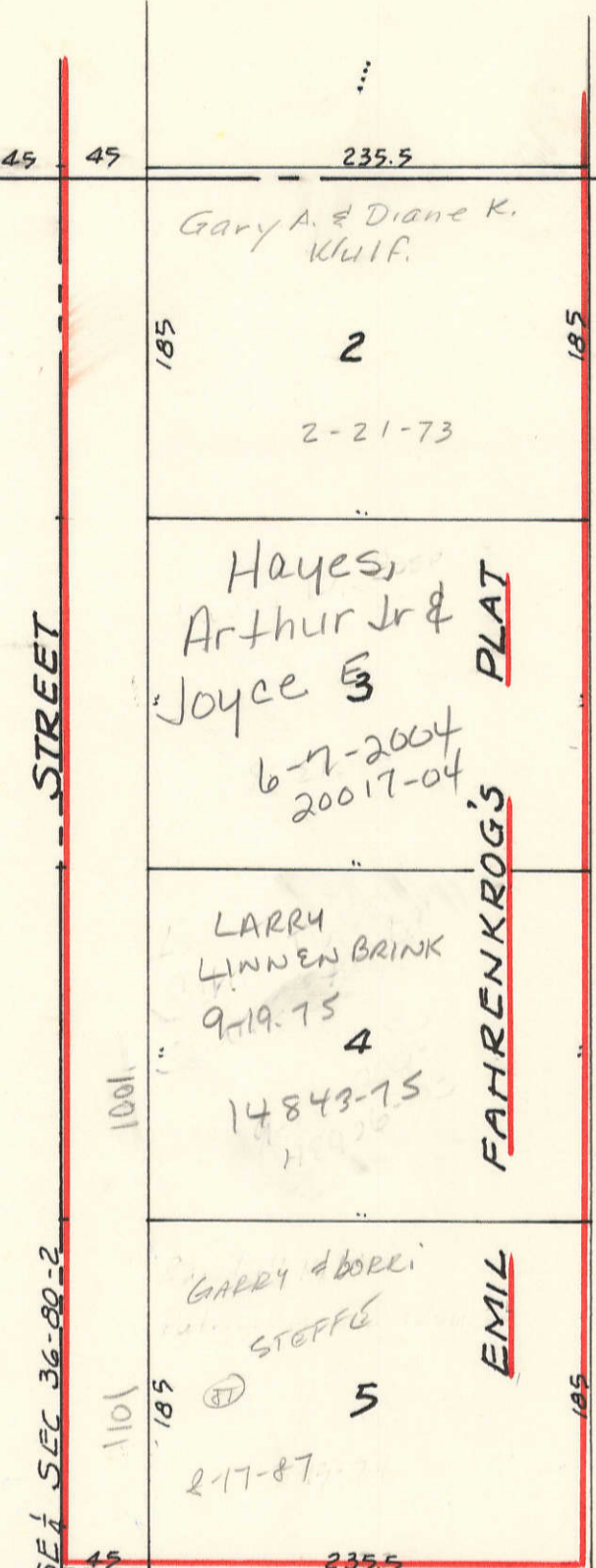


(37)

TRANSFER PAGE 2071-1424

(51)

TRANSFER PAGE 2171-1589



DENGLER SURVIVOR'S TRUST
 BETTY KRAFT
 33322-1998
 33526-2000
 41908-2001
 18446-2004 CONTR

DONAHUE CORPORATION LIMIT 7-2-74

See Sec 86 Allens Grove Township 574

SECTION 36-80-2 ALLENS GROVE TOWNSHIP

T80N
T79N

T80N
T79N

DONAHUE CORPORATION LIMIT 7-2-74
Section line between SEC 36-80-2 & SEC 1-79-2

SEC 1-79-2 HICKORY GROVE TOWNSHIP

DONAHUE SEC 36 13 53

