

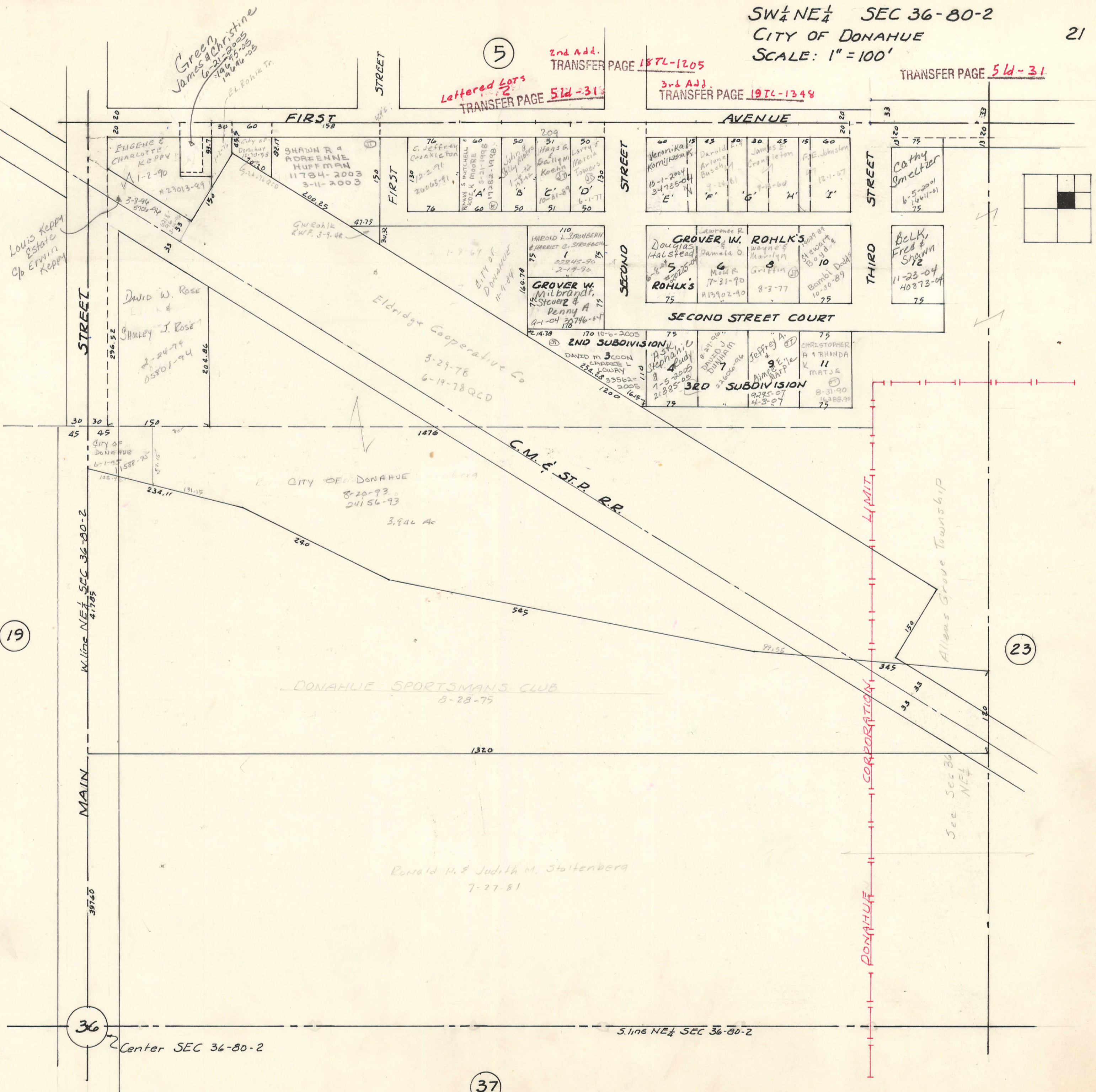
5

Lettered Lots
TRANSFER PAGE 51d-31s

2nd Add.
TRANSFER PAGE 187L-1205

3rd Add.
TRANSFER PAGE 197L-1349

TRANSFER PAGE 51d-31



Green Christine
James Christine
6-21-2005
10-15-2005
10-16-2005
EL Rohik Tr.

Louis Kappy
Estate
C/o Erwin Kappy

David W. Rose
Shirley J. Rose
2-24-74
05701-94

Eldridge Cooperative Co
3-29-76
6-19-78 QCD

CITY OF DONAHUE
8-20-93
241 56-93
3.946 Ac

DONAHUE SPORTSMAN'S CLUB
8-28-75

Ronald H. & Judith M. Stollenberg
7-27-81

ALLIENS GROVE TOWNSHIP
LIMIT
CORPORATION
DONAHUE

See Sec 36
NE 1/4

19

23

36

37

W. line NE 1/4 SEC 36-80-2
47785

MAIN

39740

Center SEC 36-80-2

S. line NE 1/4 SEC 36-80-2