

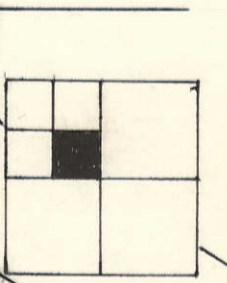
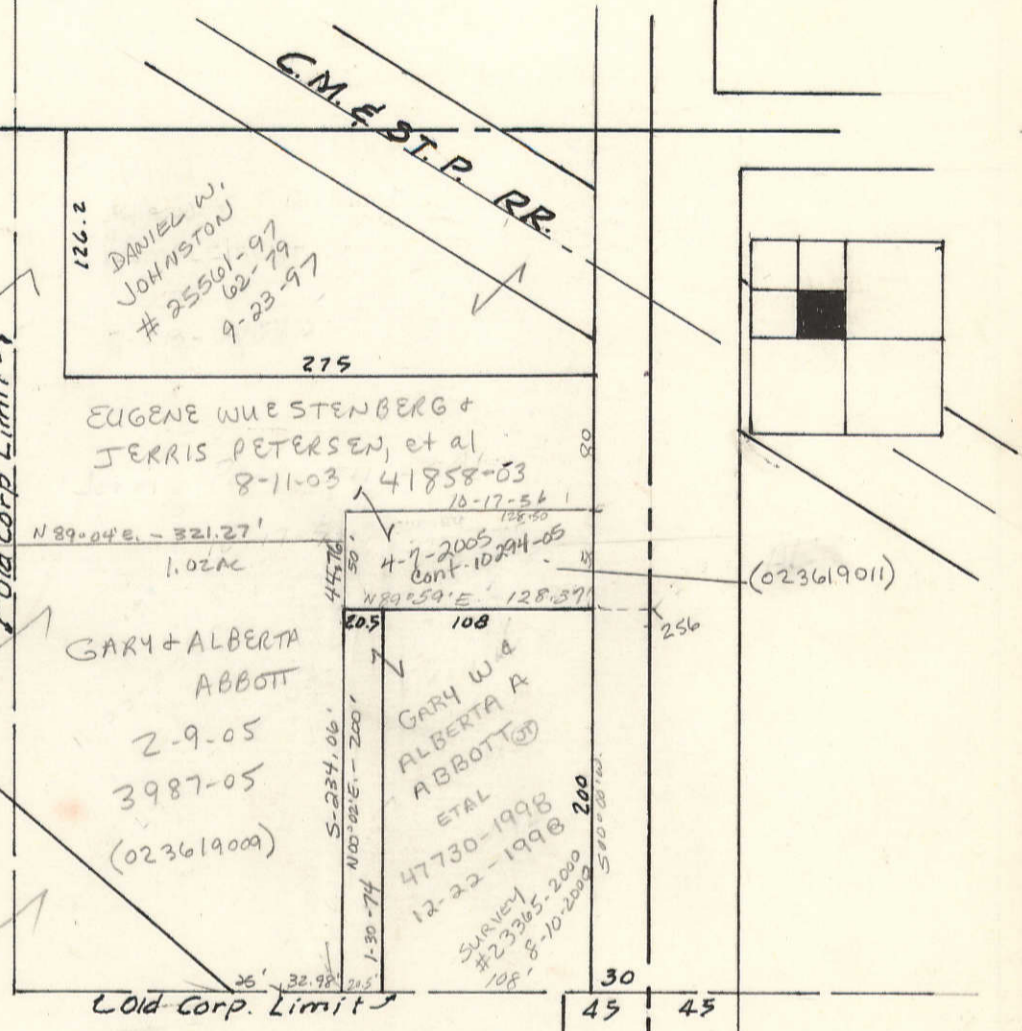
SECTION 36-80-2 ALLENS GROVE TOWNSHIP

3

SECTION 36-80-2 - ALLENS GROVE TOWNSHIP

See Section 36 Allens Grove Township
NW 1/4

7-2-74
CORPORATION
DONAHUE
LIMIT



DENNIS J & CAROLE FITZGERALD
CUSTODIAN FOR
BRETT S. & MOLLY E. FITZGERALD
1-2-90
22894-89
8-1-90
14005-90

21

MAIN
E. line NW 1/4 SEC 36-80-2

S. line NW 1/4 SEC 36-80-2

Center SEC 36-80-2

SECTION 36-80-2 ALLENS GROVE TOWNSHIP

35

36