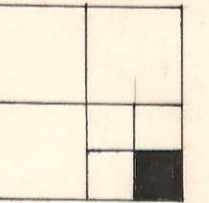


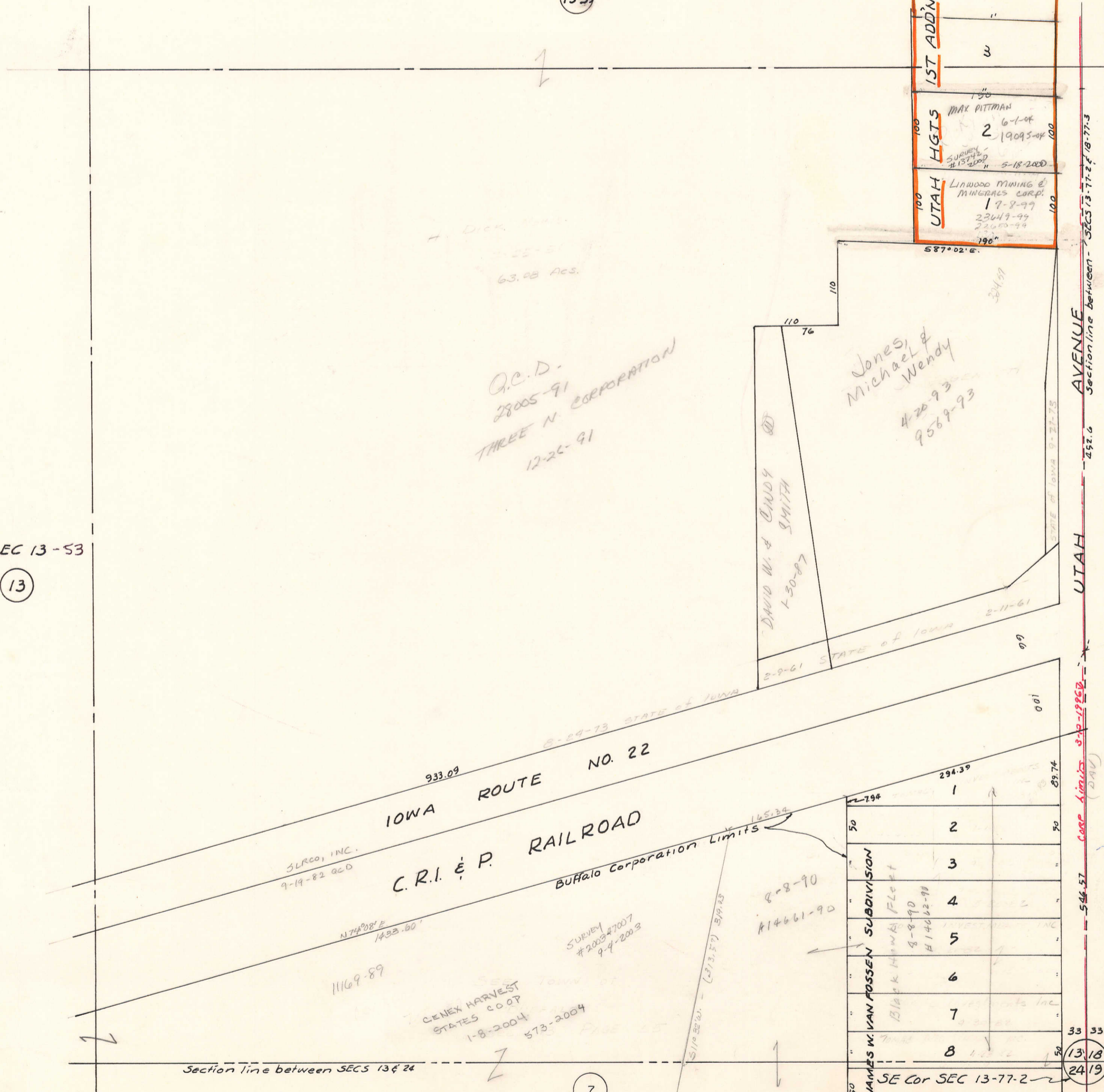
TRANSFER PAGE 545-81



13-39

SEC 13-53

13



1ST ADDN	1	100
HGTS	2	100
UTAH	1	100

MAX PITTMAN  
6-1-04  
19093-04  
LIMWOOD MINING & MINERALS CORP.  
17-8-99  
23649-99  
22600-99  
790'

Section line between SECS 13-77-2 & 18-77-3  
 AVENUE  
 Section line between SECS 13-77-2 & 18-77-3  
 452.6  
 UTAH  
 546.57  
 Corp Limits (DAV)

TRANSFER PAGE 177L-1046

SECTION 18-77-3 VOL R-3 DAVENPORT

Section line between SECS 13 & 24

SEC 24 CITY OF BUFFALO VOL B

JAMES W. VAN ROSSEN SUBDIVISION	1	294.39	89.74
	2	50	50
	3		
	4		
	5		
	6		
	7		
	8		
SEE Cor SEC 13-77-2			
SEE SEC 24 PAGE 24E			

33 33  
 13-18  
 24-19

TRANSFER PAGE 167L-857

7