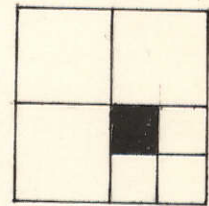


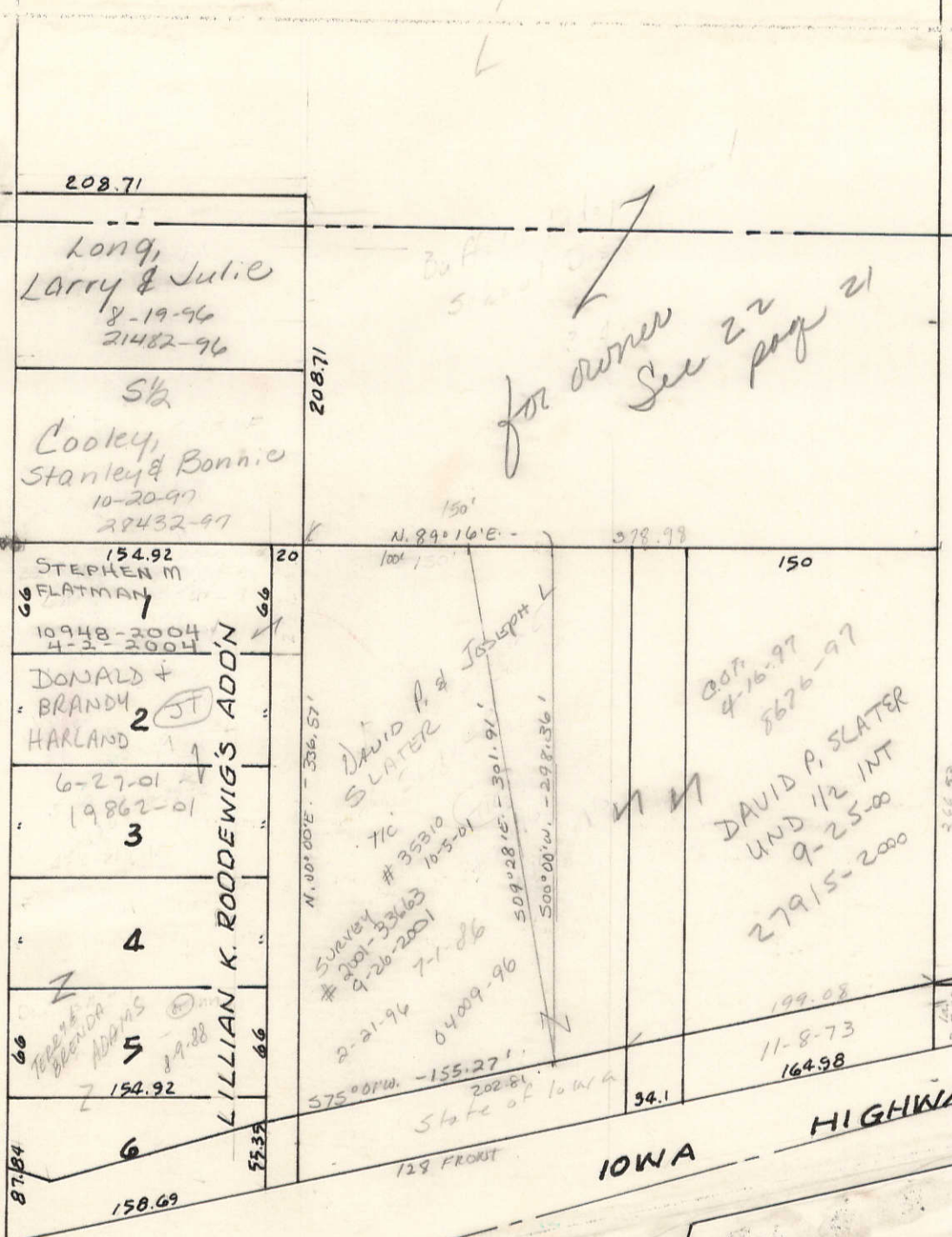
(21)

(22)



NW COR
DAV BRICK
& TILE CO
30.2 CH S.
66 E OF NE
COR Lot 9 BK 8

DODGE STREET
TRANSFER PAGE 187L-1128



DAVENPORT CEMENT CO.
5-25-83

(35)

IOWA HIGHWAY NO. 22

E.M. ST. P. & P. RR. SLRCD. ING.
Reconveyance Deed #12619-84
7-27-89
12-30-85 QCD

CITY OF BUFFALO
28276-94
9-28-94

(39)

Water Marine Enterprises, INC.
2/16-07

N 85° 43' E 32.2
S 84° 15' W 273.0
N 85° 36' E 255.0
N 78° 44' E 121.1
N 76° 20' E 284.0
S 88° 22' W 397.0
N 89° 06' E 255.0
N 81° 43' E 274.0
S 84° 31' W 300.00

MISSISSIPPI RIVER

9-9-82 QCD

Frank & Lela
Deed #12619-84
7-27-89