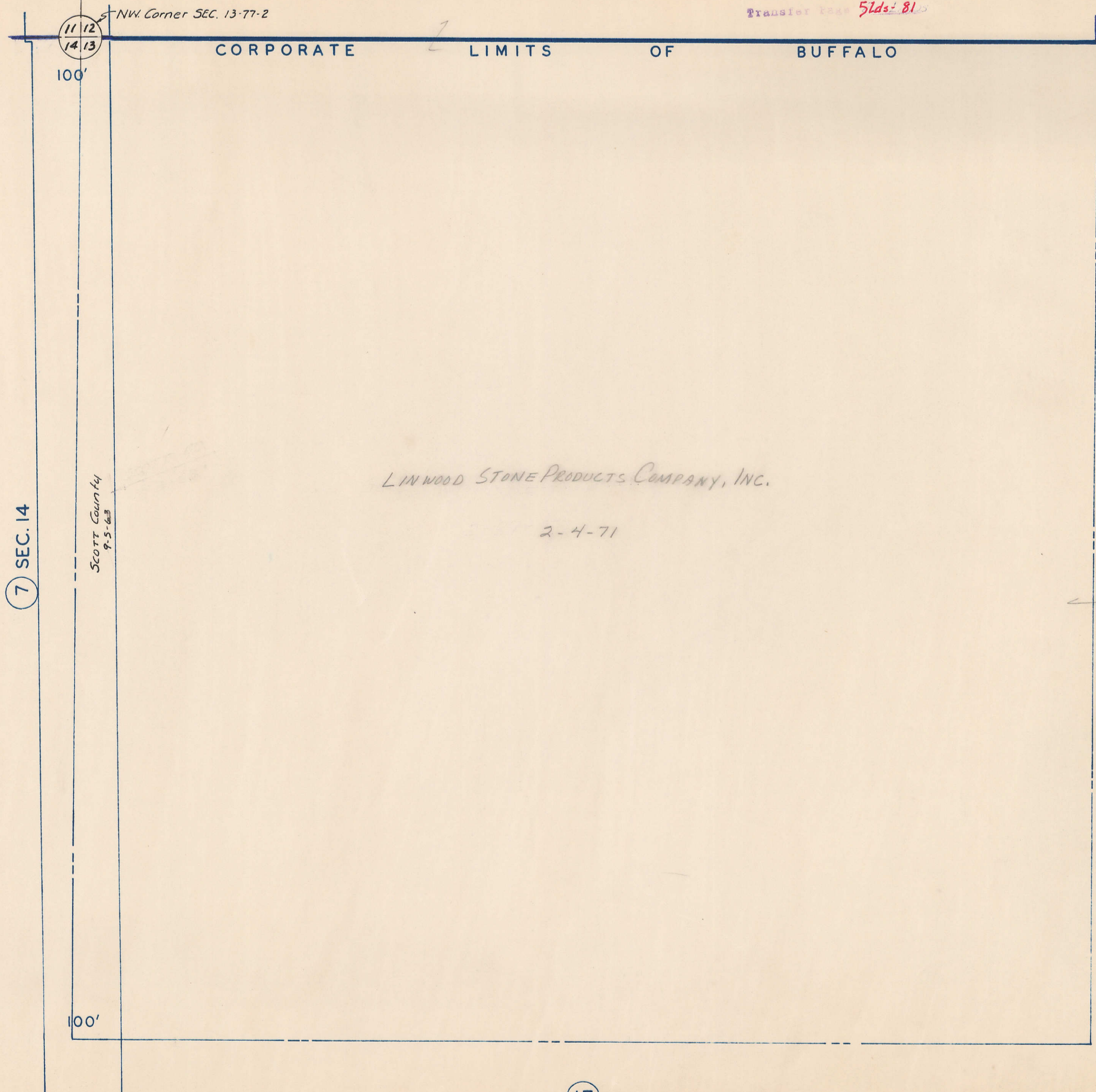


BUFFALO TOWNSHIP SW<sup>1</sup>/<sub>4</sub> SW<sup>1</sup>/<sub>4</sub> SEC. 12

Transfer Year 51ds-81

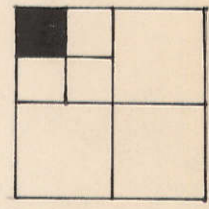


7 SEC. 14

SCOTT County  
9-5-63

LINWOOD STONE PRODUCTS COMPANY, INC.

2-4-71



Sec 13-77-2