

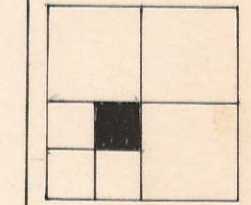
TRANSFER PAGE 127L-242

19

TRANSFER PAGE 127L-6263

Center SEC 22-77-2

2+2



ORIGINAL

1	2	3	4
140	140	140	140
52	52	52	52

Line SW 1/4 SEC 22-77-2

LERROY DODGE

1	2	3	4	5	6	7	8
140	140	140	140	140	140	140	140
52	52	52	52	52	52	52	52

CLARK'S

1	2	3	4	5	6	7	8
140	140	140	140	140	140	140	140
52	52	52	52	52	52	52	52

TOWN OF

1	2	3	4	5
140	140	140	140	140
52	52	52	52	52

THIRD

1	2	3	4	5	6	7	8
140	140	140	140	140	140	140	140
52	52	52	52	52	52	52	52

STREET

1	2	3	4	5	6	7	8
140	140	140	140	140	140	140	140
52	52	52	52	52	52	52	52

3 12-253

1	2	3	4
140	140	140	140
52	52	52	52

4 TRANSFER PAGE 127L-261

1	2	3	4	5	6	7	8
140	140	140	140	140	140	140	140
52	52	52	52	52	52	52	52

3 TRANSFER PAGE 127L-260

1	2	3	4	5	6	7	8
140	140	140	140	140	140	140	140
52	52	52	52	52	52	52	52

416 402

1	2	3	4
140	140	140	140
52	52	52	52

SECOND

1	2	3	4	5	6	7	8
140	140	140	140	140	140	140	140
52	52	52	52	52	52	52	52

STREET

1	2	3	4	5	6	7	8
140	140	140	140	140	140	140	140
52	52	52	52	52	52	52	52

2 12-252

1	2	3	4
140	140	140	140
52	52	52	52

7 TRANSFER PAGE 127L-258

1	2	3	4	5	6	7	8
140	140	140	140	140	140	140	140
52	52	52	52	52	52	52	52

TRANSFER PAGE 127L-257

1	2	3	4	5	6	7	8
140	140	140	140	140	140	140	140
52	52	52	52	52	52	52	52

1410 317 E 69.6

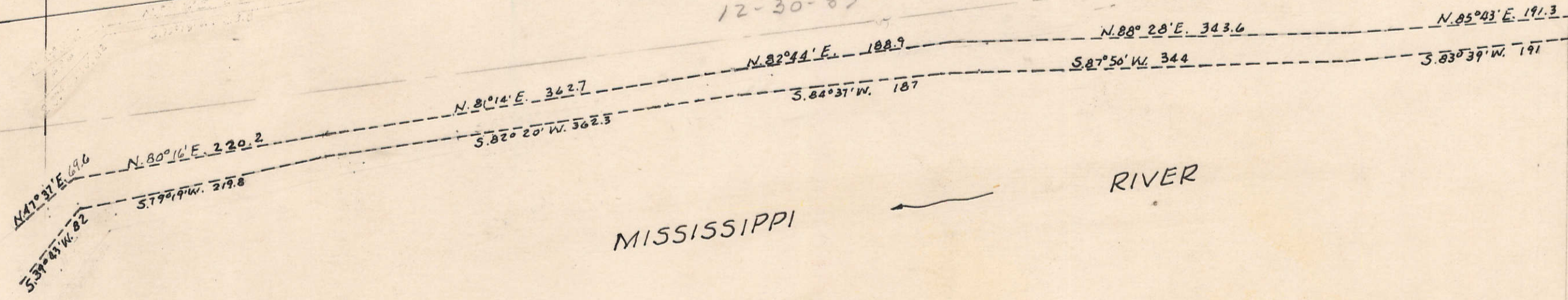
1	2	3	4
140	140	140	140
52	52	52	52

FRONT

1	2	3	4	5	6	7	8
140	140	140	140	140	140	140	140
52	52	52	52	52	52	52	52

STREET

1	2	3	4	5	6	7	8
140	140	140	140	140	140	140	140
52	52	52	52	52	52	52	52



SLRCD, INC. Reconveyance Deed #12619-89
12-30-85

RIVER

MISSISSIPPI

33

37