

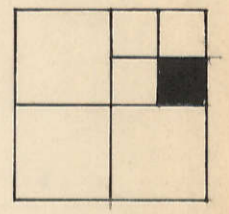
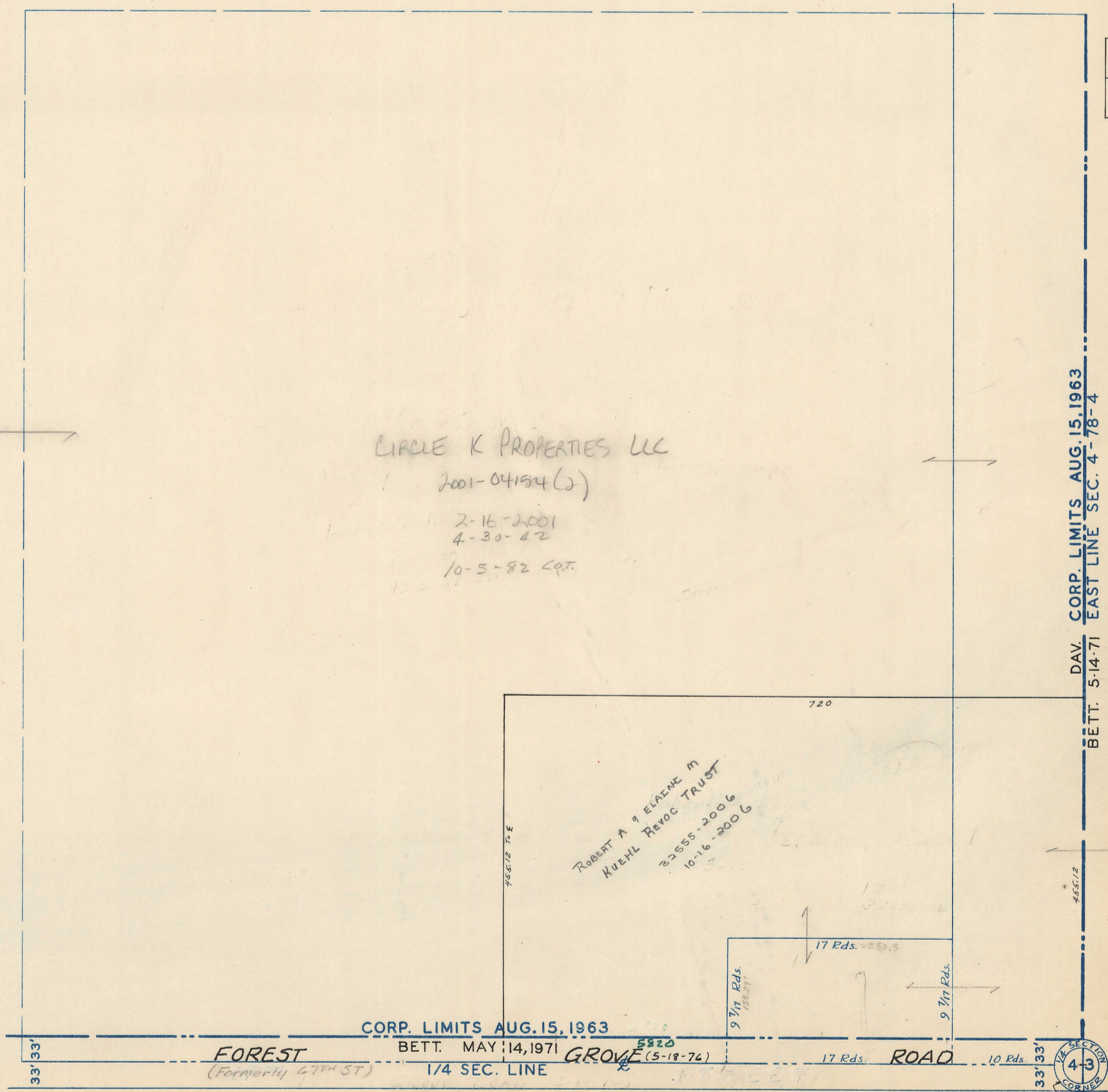
7

TRANSFER PAGE 61d3-205

21

CIRCLE K PROPERTIES LLC
2001-041924(2)
2-16-2001
4-30-42
10-5-82 C.O.T.

ROBERT A & EVELINE M
KUEHL REVOC TRUST
32555-2006
10-16-2006



DAV. CORP. LIMITS AUG. 15, 1963
BETT. 5-14-71 EAST LINE SEC. 4-78-4

BETT.
H-3/17

~~63~~

CORP. LIMITS AUG. 15, 1963

BETT. MAY 14, 1971

FOREST
(Formerly 47th ST)

1/4 SEC. LINE

GROVE 5820
(5-18-76)

17 Rds. ROAD

10 Rds.

1/4 SECTION
4-3
CORNER

E 1/4 Corner SEC. 4

G4 39 BETT.