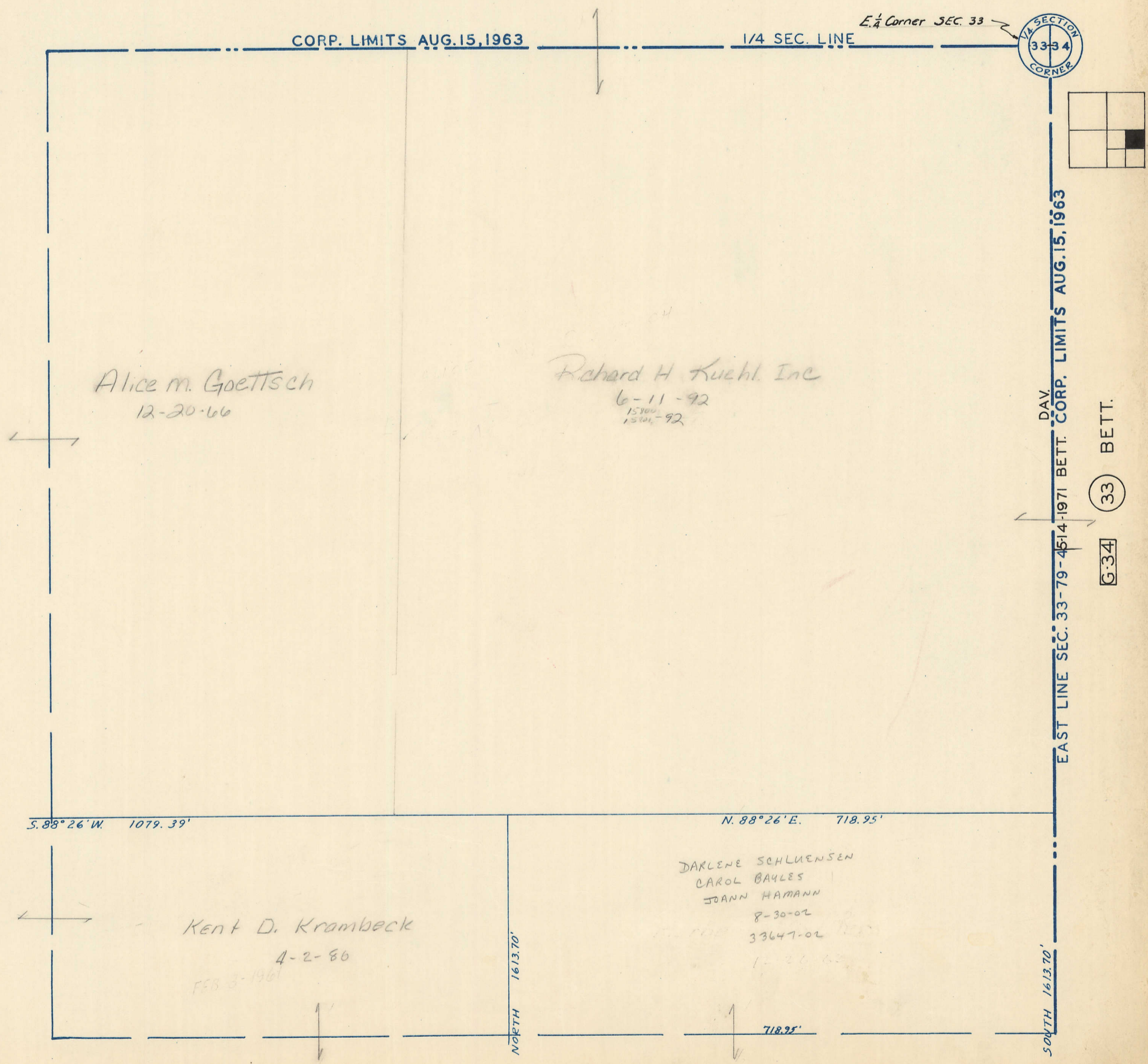


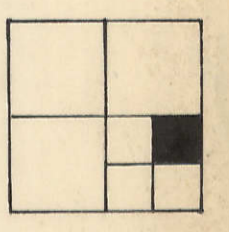
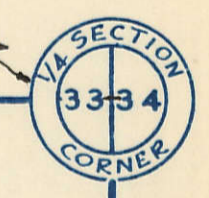
TRANSFER PAGE 72d-349



CORP. LIMITS AUG. 15, 1963

1/4 SEC. LINE

E. 1/4 Corner SEC. 33



Alice M. Goettsch
12-20-66

Richard H. Kuehl, Inc
6-11-92
15800-92
15701-92

DAY. CORP. LIMITS AUG. 15, 1963
EAST LINE SEC. 33-79-4514-1971 BETT. CORP. LIMITS AUG. 15, 1963

33 BETT.

G-34

S. 88° 26' W. 1079.39'

N. 88° 26' E. 718.95'

Kent D. Krambeck
4-2-86
FEB 3-1961

DARLENE SCHLUENSEN
CAROL BAYLES
JOANN HAMANN
8-30-02
33647-02
1-20-62

NORTH 1613.70'

SOUTH 1613.70'

718.95'

37

55