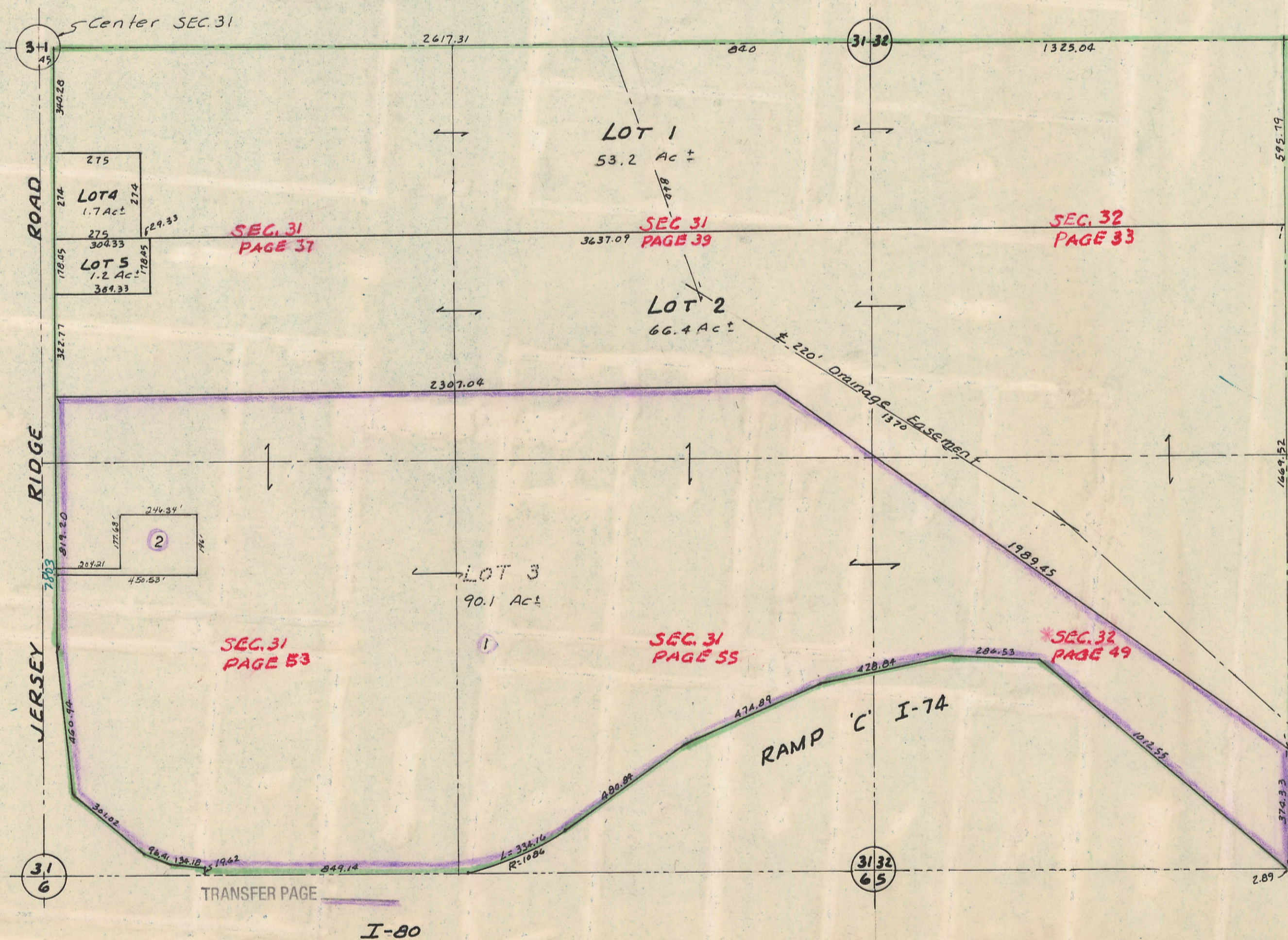


PLAT OF KREITER ADDITION

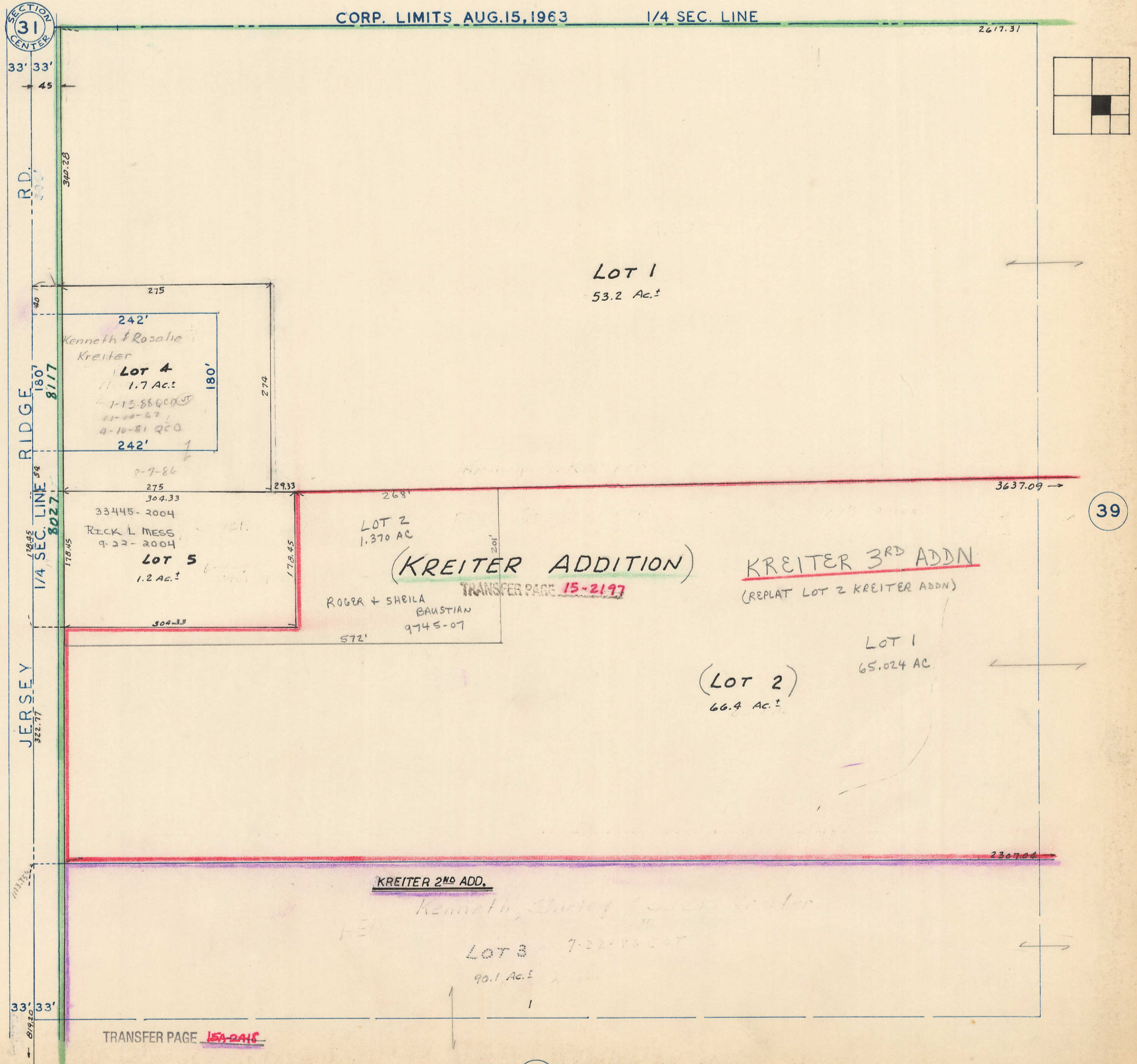
Being part of the SE  $\frac{1}{4}$  SEC. 31 and the W.  $\frac{1}{2}$  of the SW  $\frac{1}{4}$  SEC. 32, T-79-N, R-4-E of the 5<sup>TH</sup> P.M.



LINCOLN TOWNSHIP SW 1/4 NE 1/4 SEC. 31

CORP. LIMITS AUG. 15, 1963

1/4 SEC. LINE



35

39

53

TRANSFER PAGE 150-2415

KREITER 2ND ADD.

(KREITER ADDITION)

KREITER 3RD ADDN

(LOT 2)

LOT 2  
1.370 AC

LOT 5  
1.2 AC.

LOT 4  
1.7 AC.

LOT 1  
53.2 AC.

LOT 1  
65.024 AC

LOT 3  
90.1 AC.

Kenneth, Shirley & Jack Kreiter

Kenneth & Rosalie Kreiter

RICK L MESS  
9-22-2004

ROGER & SHEILA BAUSTIAN  
9-7-85-07

4-1-86 QCO  
11-10-87 L  
4-10-81 QCO

TRANSFER PAGE 15-2197

(REPLAT LOT 2 KREITER ADDN)

SECTION CENTER  
31

RIDGE RD.  
JERSEY

33' 33'

45

340.28

180

8117

180

178.45

178.45

178.45

178.45

178.45

178.45

178.45

178.45

178.45

178.45

178.45

178.45

178.45

178.45

178.45

178.45

178.45

178.45

178.45

178.45

178.45

178.45

178.45

178.45

178.45

178.45

178.45

178.45

178.45

178.45

178.45

178.45

178.45

178.45

178.45

178.45

178.45

178.45

178.45

178.45

178.45

178.45

178.45

178.45

178.45

178.45

178.45

178.45