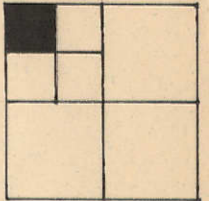


Y-6

49

Transfer Page 62ds-208



SECTION
16
127
CORNER

NORTH LINE SEC. 7-78-4

30' 30'

WEST LINE SEC. 7-78-4
AVENUE

22033-1997
8-1-1997
NICHOLAS C JR &
DAVID N + JOHN D
KREMER

PARCEL 5

QL 'A'

X-12

7

PARCEL 4

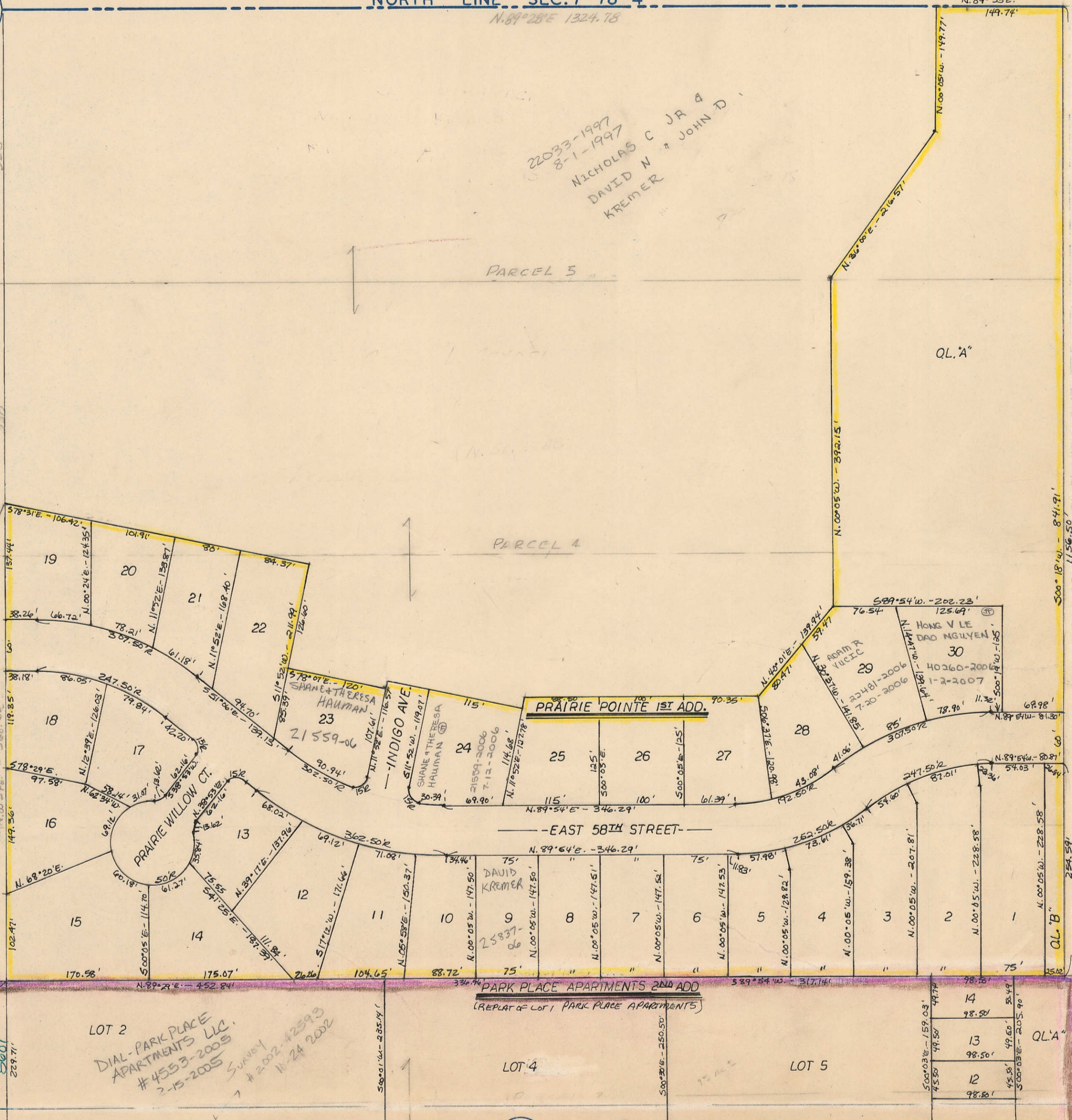
3

BLANKS TO:
PRAIRIE POINTE
PARTNERS, LLC.
2-8195-205
8-29-05

WEST LINE SEC. 7-78-4

EASTERN

30' 30'



LOT 2
DIAL-PARK PLACE
APARTMENTS LLC.
#4553-2005
2-15-2005

PARK PLACE APARTMENTS 2ND ADD
(REPLAT OF LOT 1, PARK PLACE APARTMENTS)

LOT 4

LOT 5

17

QL 'A'

QL 'B'