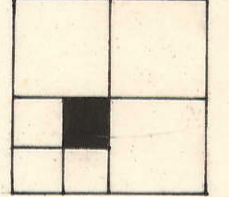


19

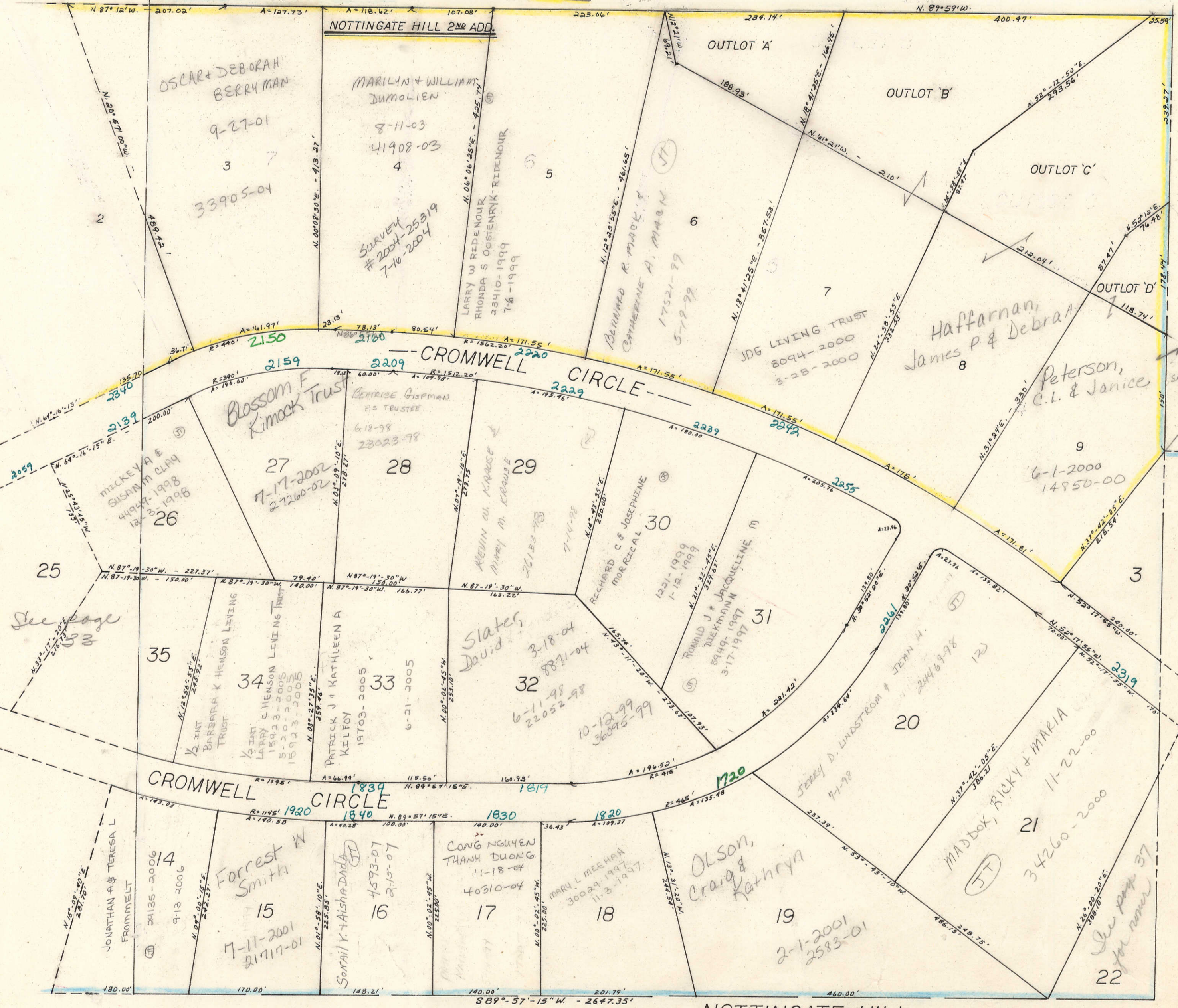
TRANSFER PAGE 61ds-207



1/4 SECTION LINE

EAST 67TH STREET

TRANSFER PAGE 15A-2446



33

37

See page 33

See page 37 for owner

Blanks to River Valley Dev. Corp #07620-95 4-15-95

51

NOTTINGATE HILL

TRANSFER PAGE 15A-2342