

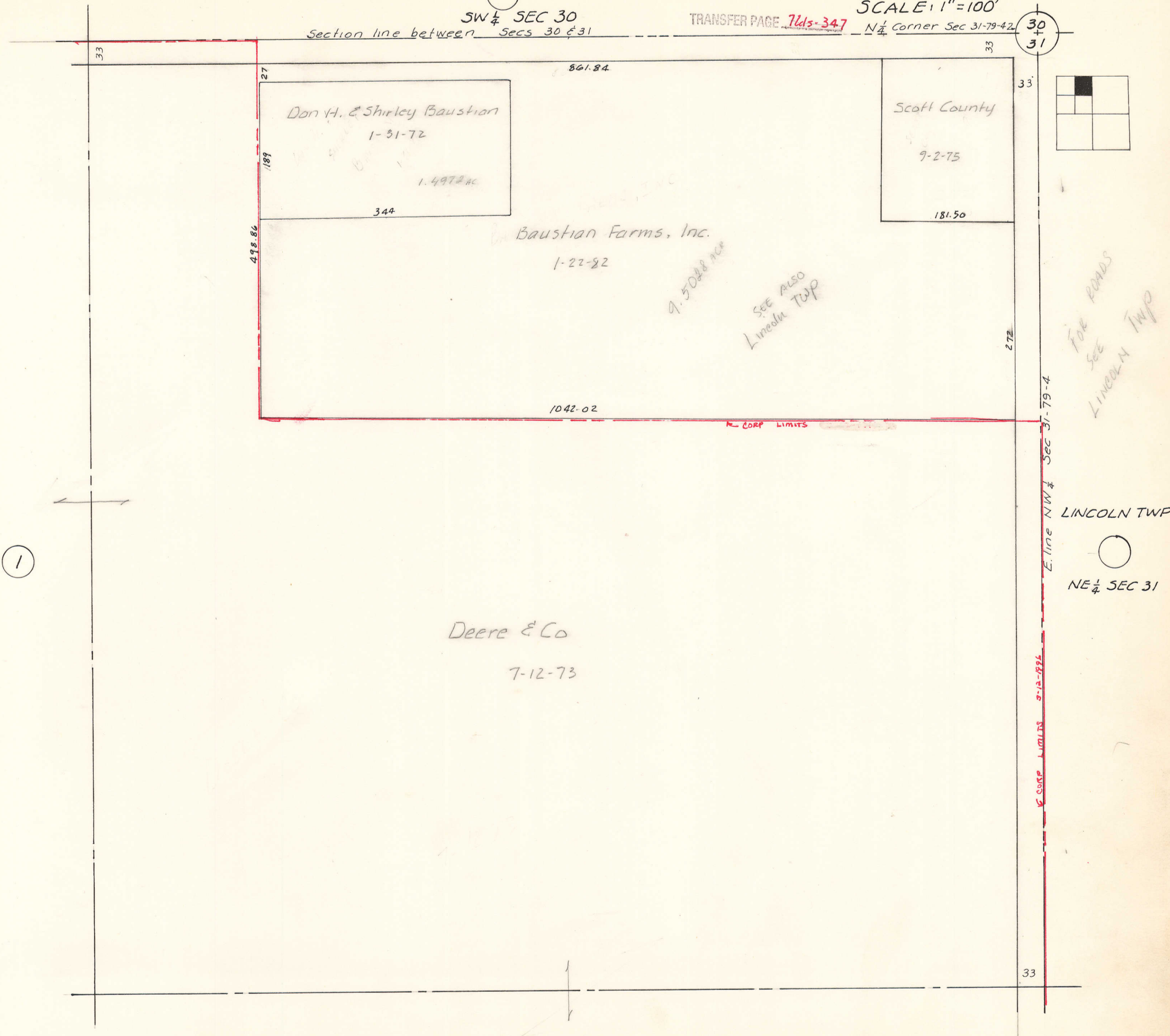
SW 1/4 SEC 30

Section line between Secs 30 & 31

TRANSFER PAGE 7615-347

N 1/4 Corner Sec 31-79-4

30
31



1

19

LINCOLN TWP

NE 1/4 SEC 31

E. line NW 1/4 Sec 31-79-4

CORP LIMITS 3-12-1994

CORP LIMITS

