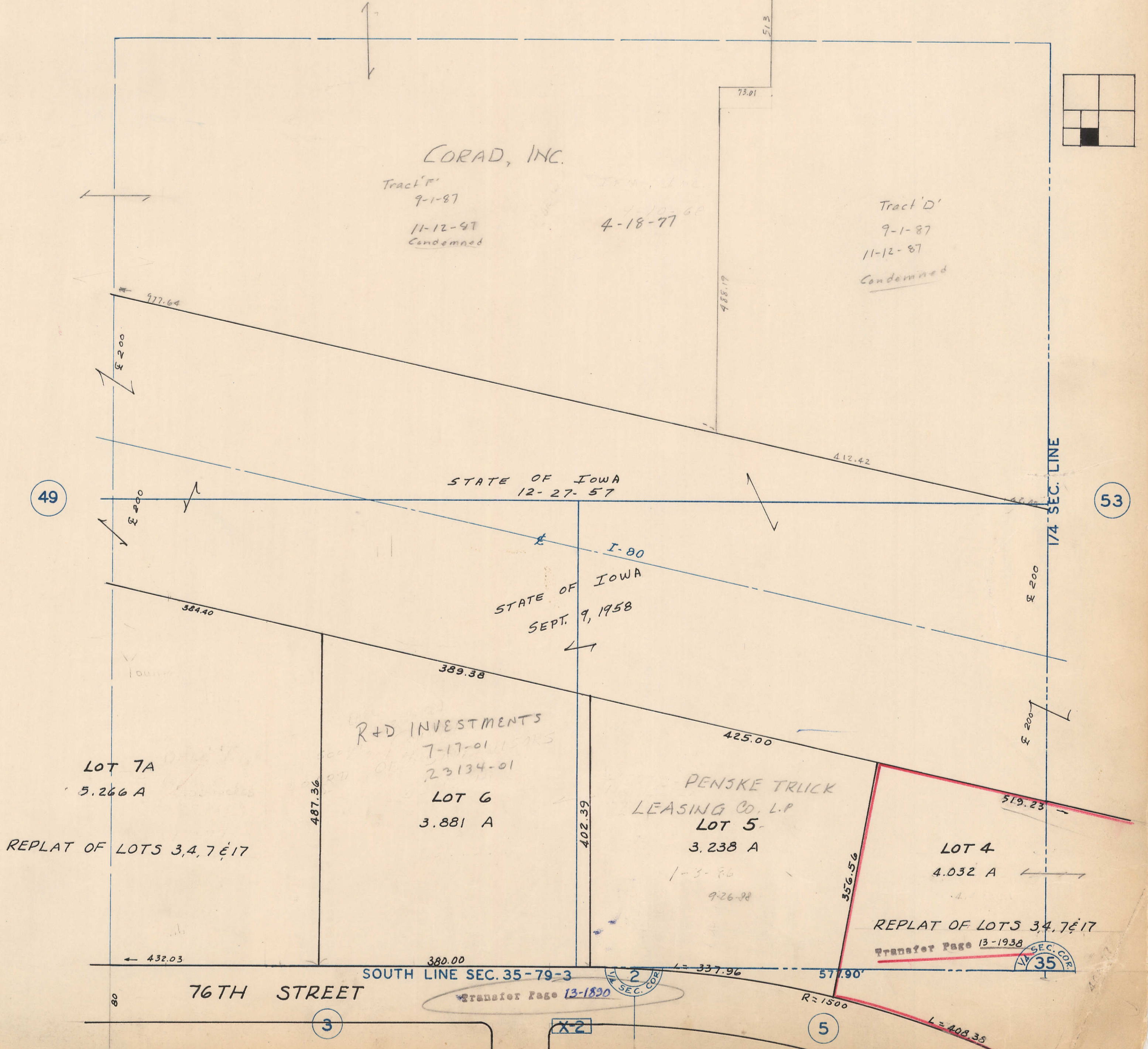


TRANSFER PAGE 8Lds. 459

35



CORAD, INC.

Tract 'F'
9-1-87
11-12-87
Condemned

1-10-68
4-18-77

Tract 'D'
9-1-87
11-12-87
Condemned

STATE OF IOWA
12-27-57

I-80
STATE OF IOWA
SEPT. 9, 1958

R+D INVESTMENTS
7-17-01
23134-01

LOT 6
3.881 A

PENSKE TRUCK
LEASING CO. L.P.
LOT 5
3.238 A

LOT 7A
5.266 A

REPLAT OF LOTS 3, 4, 7 & 17

LOT 4
4.032 A

REPLAT OF LOTS 3, 4, 7 & 17
Transfer Page 13-1938

76TH STREET

SOUTH LINE SEC. 35-79-3

Transfer Page 13-1820

35

3

X2

5