

55

W-34

49

X-35

TRANSFER PAGE 61d's-171

T79N
T78N

32
SEC. COR.

562.3'

SECTION CORNER
3435

NORTH LINE SEC. 2-78-3

SCOTT COUNTY REGIONAL INDUSTRIAL PARK 4TH ADD.

TRANSFER PAGE 15A-2360

76TH STREET

STREET

30

30

30

30

30

30

30

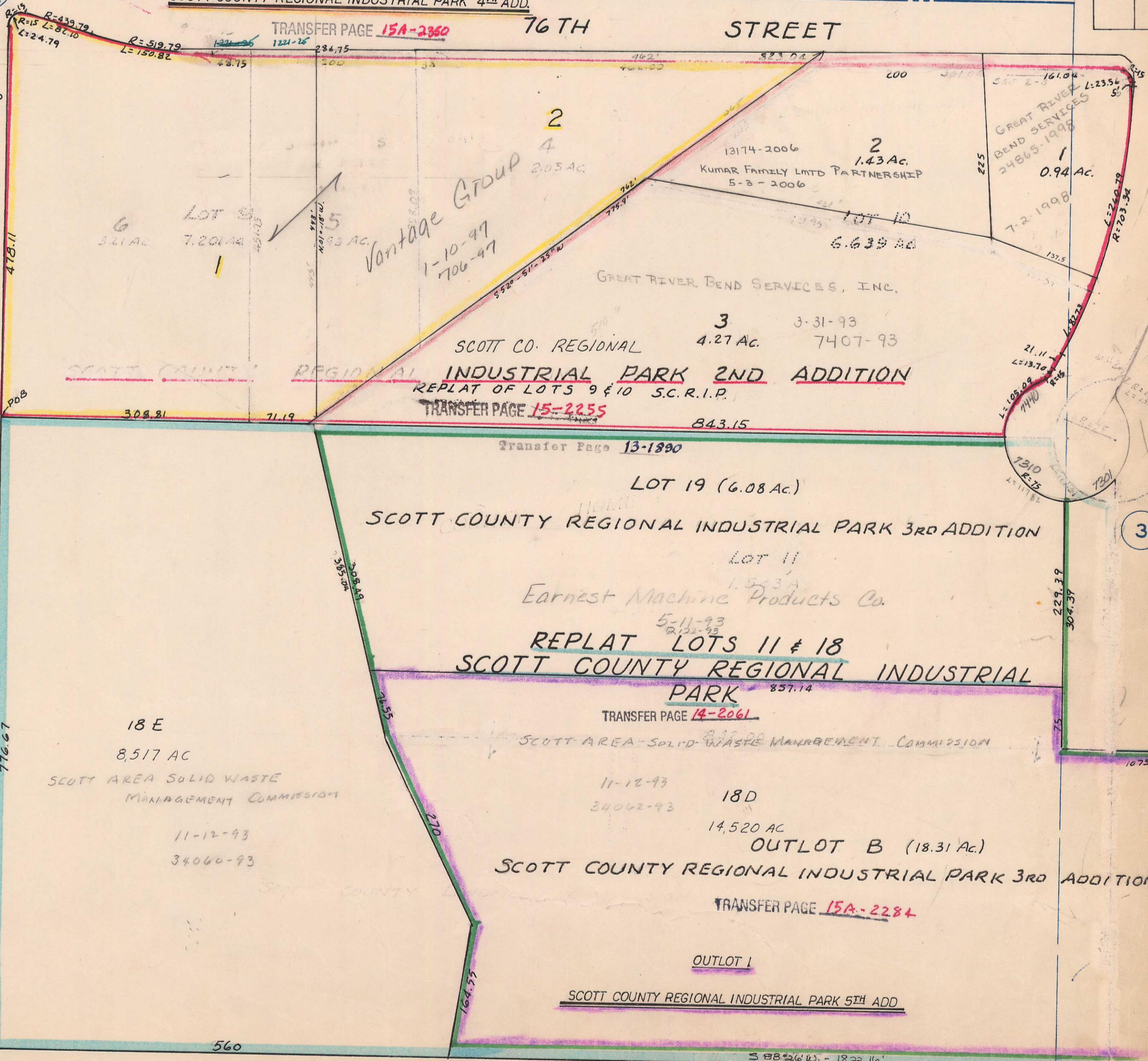
30

30

WEST LINE SEC. 2-78-3
MARQUETTE STREET

W-3

7



Lot 6
3.21 AC

Lot 7
7.20 AC

Lot 8
3.93 AC

Vantage Group
1-10-97
706-97

2

4
205 AC

13174-2006
KUMAR FAMILY LMTD PARTNERSHIP
5-3-2006

2
1.43 AC

GREAT RIVER
BEND SERVICES
24865-1998
1
0.94 AC
7-2-1998

GREAT RIVER BEND SERVICES, INC.

3
3-31-93
4.27 AC
7407-93

SCOTT CO. REGIONAL INDUSTRIAL PARK 2ND ADDITION
REPLAT OF LOTS 9 & 10 S.C.R.I.P.

TRANSFER PAGE 15-2255

Transfer Page 13-1990

LOT 19 (6.08 Ac.)

SCOTT COUNTY REGIONAL INDUSTRIAL PARK 3RD ADDITION

LOT 11

Earnest Machine Products Co.

REPLAT LOTS 11 & 18
SCOTT COUNTY REGIONAL INDUSTRIAL PARK

TRANSFER PAGE 14-2061

SCOTT AREA SOLID WASTE MANAGEMENT COMMISSION

18 E
8,517 AC
SCOTT AREA SOLID WASTE
MANAGEMENT COMMISSION

11-12-93
34060-93

11-12-93
34062-93

18D

14,520 AC

OUTLOT B (18.31 Ac.)

SCOTT COUNTY REGIONAL INDUSTRIAL PARK 3RD ADDITION

TRANSFER PAGE 15A-2284

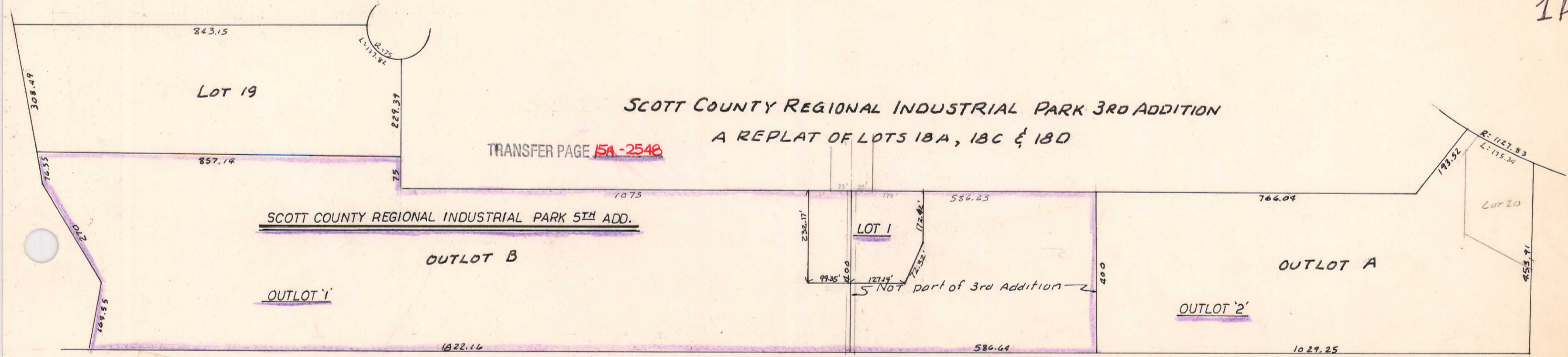
OUTLOT 1

SCOTT COUNTY REGIONAL INDUSTRIAL PARK 5TH ADD.

560

S 88°26'W - 1822.16'

TRANSFER PAGE 15A-2648



SCOTT COUNTY REGIONAL INDUSTRIAL PARK 3RD ADDITION

A REPLAT OF LOTS 18A, 18C & 18D

TRANSFER PAGE 15A-2548

SCOTT COUNTY REGIONAL INDUSTRIAL PARK 5TH ADD.

OUTLOT B

OUTLOT '1'

LOT 1

Not part of 3rd Addition

OUTLOT A

OUTLOT '2'

Lot 20