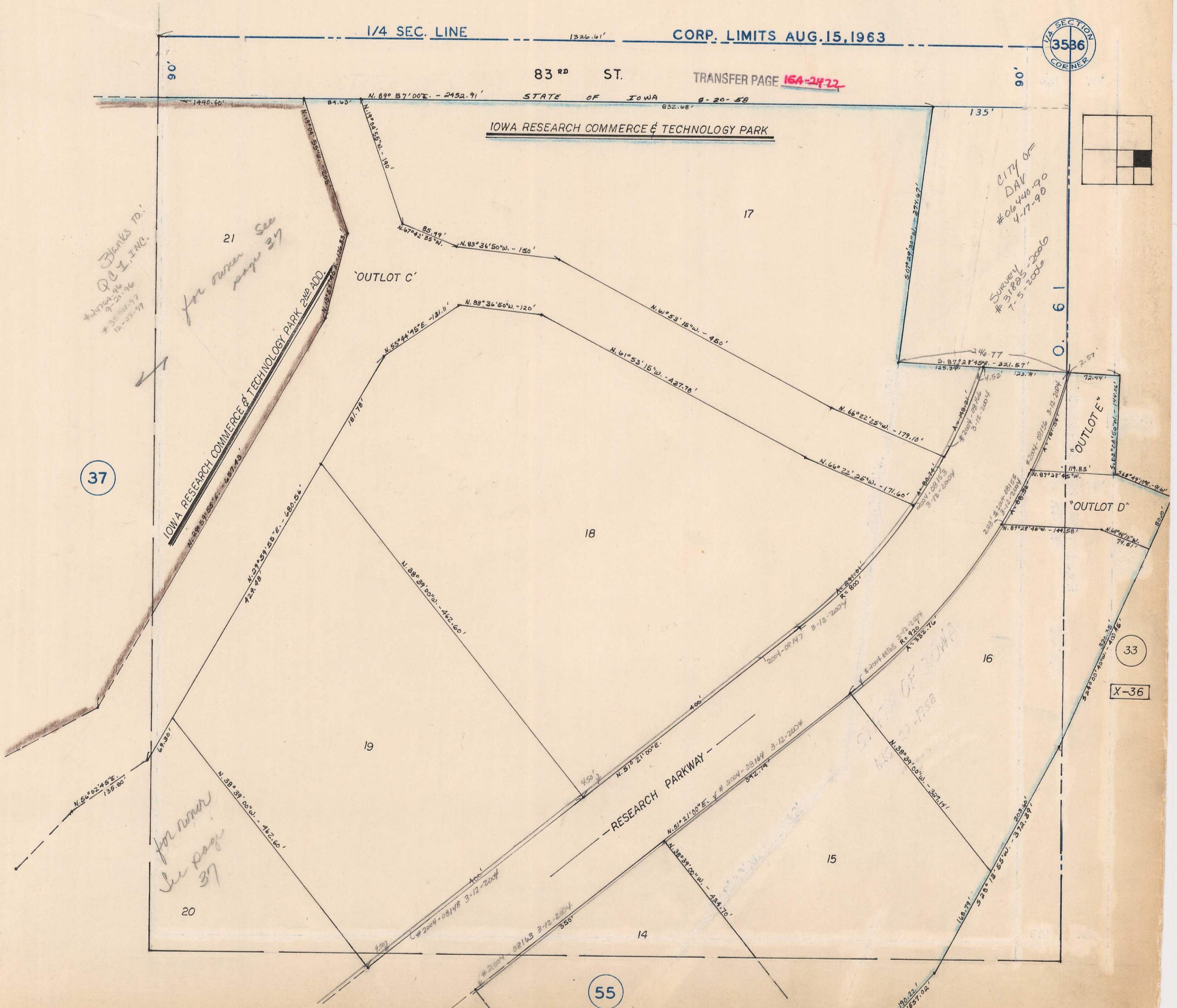


SHERIDAN TOWNSHIP SE 1/4 NE 1/4 SEC. 35

TRANSFER PAGE 81d-459



Blanks to:
QCI, INC.
#20764-96
9-23-96
#30881-97
12-23-97

for owner see
page 37

CITY OF
DAV
#06440-90
4-17-90
SURVEY
#31805-2006
7-5-2006

37

for owner
see page
37

33

X-36

55

VIA SECTION
CORNER
3586

1/4 SEC. LINE

CORP. LIMITS AUG. 15, 1963

83RD ST.

TRANSFER PAGE 16A-2422

IOWA RESEARCH COMMERCE & TECHNOLOGY PARK

IOWA RESEARCH COMMERCE & TECHNOLOGY PARK 2ND ADD.

RESEARCH PARKWAY

OUTLOT C

OUTLOT D

OUTLOT E

STATE OF IOWA

0.61

