

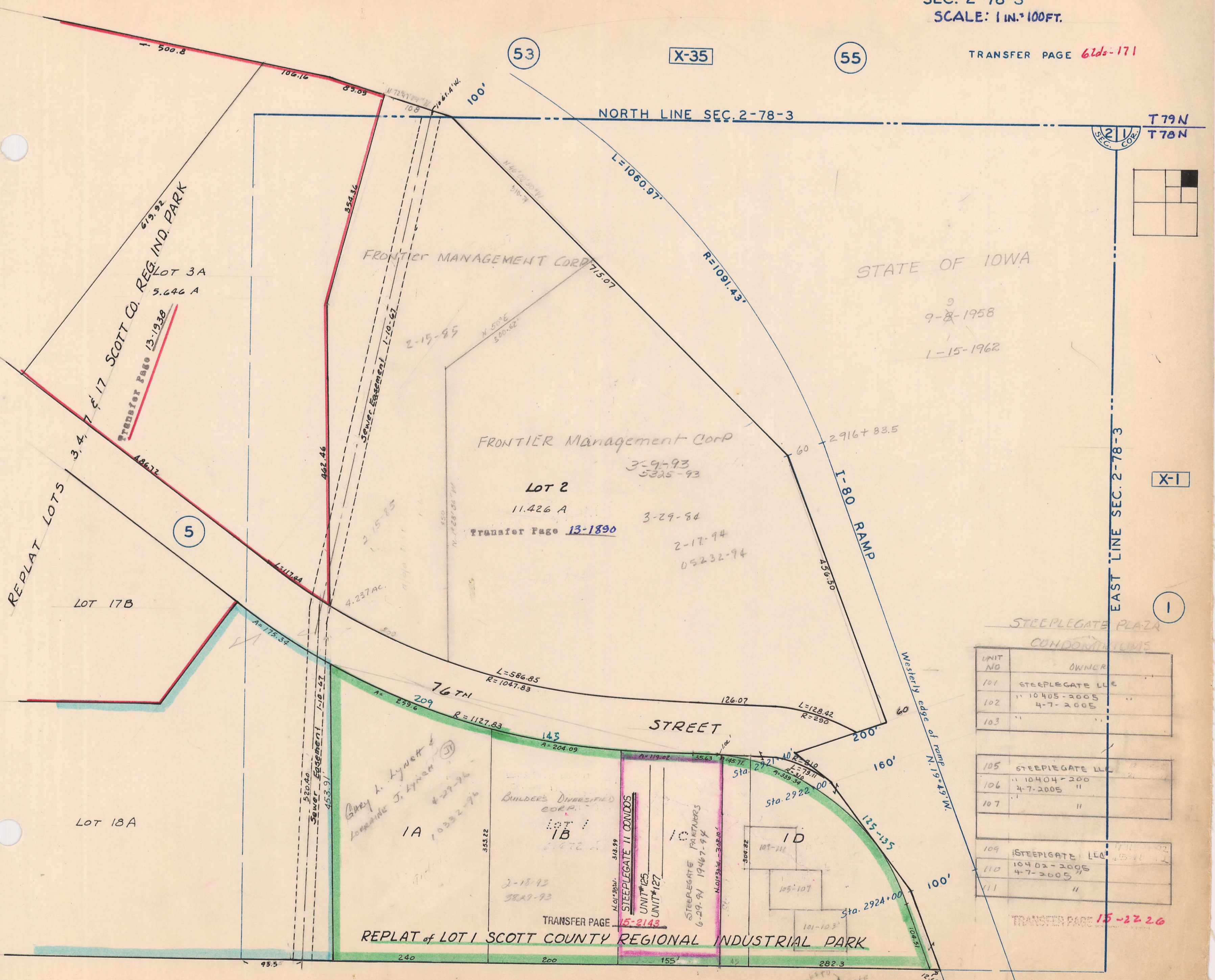
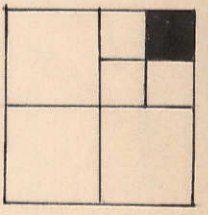
53

X-35

55

211
 SEC. COR.

T79N
 T78N



9-8-1958
 1-15-1962

FRONTIER Management Corp
 LOT 2
 11.426 A
 Transfer Page 13-1890

LOT 3A
 5.646 A
 Transfer Page 13-1938

REPLAT LOTS
 3, 4, 7 & 17

5

LOT 17B

LOT 18A

3-9-93
 5325-93

3-29-84

2-17-94
 05232-94

Gary L. Lynett &
 Loraine J. Lynett
 IA 10332-76

BUILDERS DIVERSIFIED
 CORP.
 LOT 1
 IB
 2-18-93
 3829-93

STEPIEGATE II CONDOS
 UNIT #125
 UNIT #127

STEPIEGATE PARTNERS
 6-29-94 19467-94

ID
 101-111
 105-107

REPLAT of LOT 1 SCOTT COUNTY REGIONAL INDUSTRIAL PARK

STEPIEGATE PLAZA
 CONDOMINIUMS

UNIT NO	OWNER
101	STEPIEGATE LLC
102	" 10405-2005 "
103	" " 4-7-2005 "
105	STEPIEGATE LLC
106	" 10404-200 "
107	" " 4-7-2005 "
109	STEPIEGATE LLC
110	" 10402-2005 "
111	" " 4-7-2005 "

TRANSFER PAGE 15-2220

23

Blanketed
 StepiEGate
 Partners
 7-12-89
 #11805-89