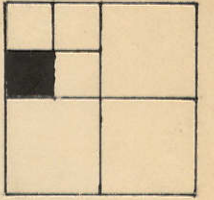


S.W.1/4, N.W.1/4
SEC. 11-78-3
SCALE: 1 IN. = 100 FT.

17



OAK BROOK MEADOWS 1ST ADD
TRANSFER PAGE 15-2230

TRANSFER PAGE 15-2231

TRANSFER PAGE 6243-180

TRANSFER PAGE 12-1751

TRANSFER PAGE 154-2563

W-10

23

19

WEST LINE SEC. 11-78-3
508.9'

OAKBROOK SIXTH ADDITION

220' MARQUETTE ST

1/4 SECTION CORNER
1041
33'33"

53 RD.

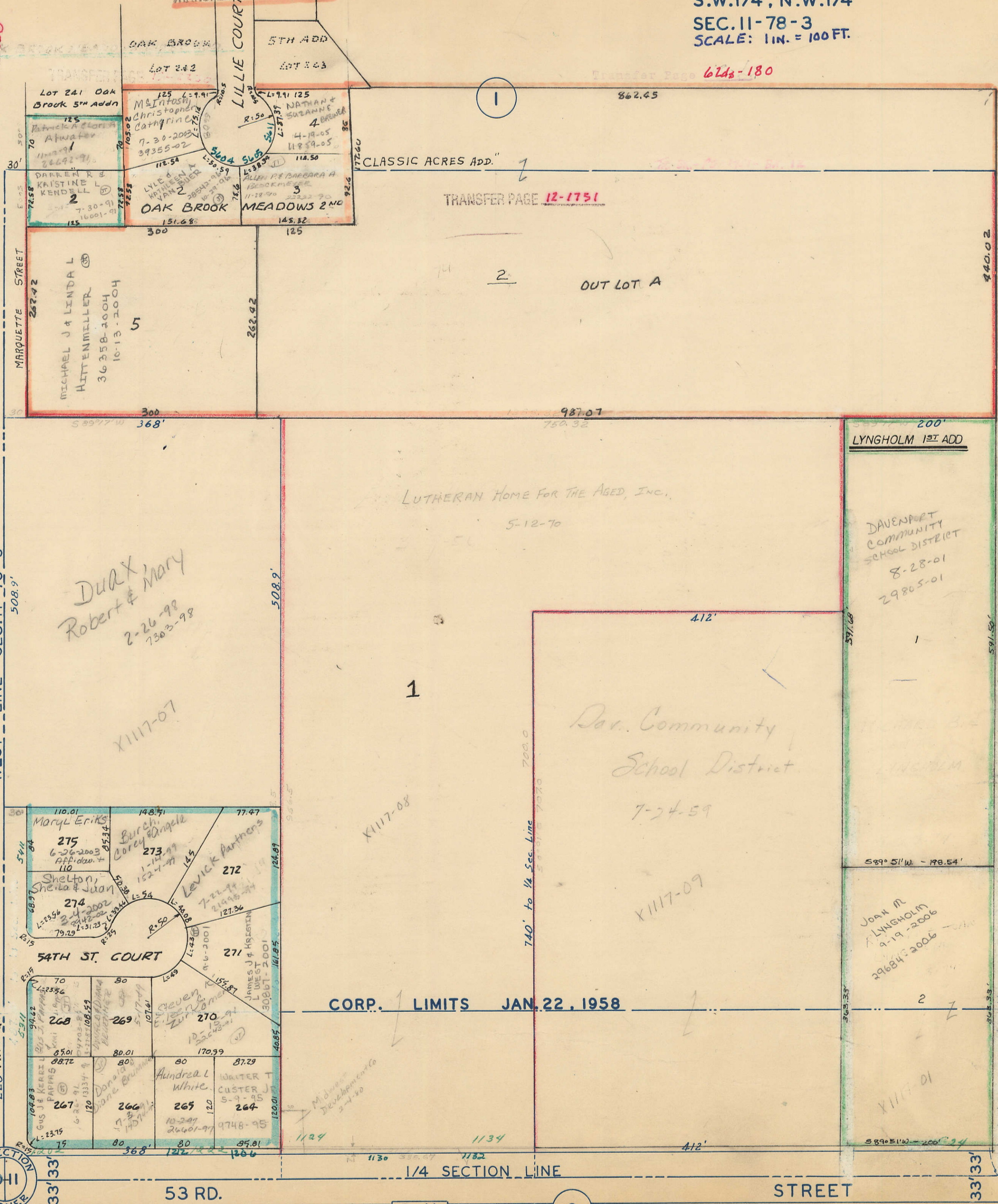
P-II

9

1/4 SECTION LINE

STREET

33'33"



Midwest Development Co
8-25-78

Duax Mary
Robert & Mary
2-26-98
7303-98

LUTHERAN HOME FOR THE AGED, INC.
5-12-70

Davenport Community
School District
7-24-59

DAVENPORT
COMMUNITY
SCHOOL DISTRICT
8-28-01
29805-01

JOAN M.
LYNGHOLM
9-19-2006
296845-2006

X1117-07

X1117-08

X1117-09

X1117-01

1

2

5

1

2

MARQUETTE STREET
267.42

30'

30'

30'

30'

30'

30'

30'

30'

30'

30'

30'

30'

30'

30'

30'

30'

30'

30'

30'

30'

30'

30'

30'

30'

MICHAEL J & LINDA L
HITTENMILLER
36358-2004
10-13-2004

DARREN R &
KAISTINE L
KENDELL
7-30-91
16001-91

LOT 241 Oak
Brook 5th Addn
125
Patrick A & Gloria
Atwater
11-22-91
26692-91

LOT 242
125
M. Intosh
Christopher
Cathryn
7-30-2003
39355-02

LOT 243
125
L. 991 125
NATHAN &
SUZANNE
4-19-05
4859-05

LYLE &
NATHAN A
KYLE
20542-1159
10-24-06

5404 5605
L. 50 59
L. 57 57
L. 58 58
L. 59 59
L. 60 60

5TH ADD
LOT 243

LILLIE COURT

ALLEN R & BARBARA A
13000 EMEER
11-18-90
22222-90

OAK BROOK
MEADOWS 2ND

151.68
145.32

300
125

300
368'

262.42

508.9'

508.9'

987.07
750.32

412'

740' to 1/4 Sec. Line
540' to 1/4 Sec. Line

700.0
540' to 1/4 Sec. Line

200'

200'

200'

200'

200'

200'

200'

200'

200'

200'

200'

200'

200'

200'

200'

200'

200'

200'

200'

200'

200'

200'

200'

200'

200'

200'

200'

200'

200'

200'

200'

200'

200'

200'

200'

200'

33'33"

33'33"

33'33"

33'33"

33'33"

33'33"

33'33"

33'33"

33'33"

33'33"

33'33"

33'33"

33'33"

33'33"

33'33"

33'33"

33'33"

33'33"

33'33"

33'33"

33'33"

33'33"

33'33"

33'33"

33'33"

33'33"

33'33"

33'33"

33'33"

33'33"

33'33"

33'33"

33'33"

33'33"

33'33"

33'33"

33'33"

33'33"

33'33"

33'33"

33'33"

33'33"

33'33"

33'33"

33'33"

33'33"

33'33"

33'33"

33'33"

33'33"

33'33"

33'33"

33'33"

33'33"

33'33"

33'33"

33'33"

33'33"

33'33"

33'33"

33'33"

33'33"

33'33"

33'33"

33'33"

33'33"

33'33"

33'33"

33'33"

33'33"

33'33"

33'33"

33'33"

33'33"

33'33"

33'33"

33'33"

33'33"

33'33"

33'33"

33'33"

33'33"

33'33"

33'33"

33'33"

33'33"

33'33"

33'33"

33'33"

33'33"

33'33"

33'33"

33'33"

33'33"

33'33"

33'33"

33'33"

33'33"

33'33"

33'33"

33'33"

33'33"

33'33"

33'33"

33'33"

33'33"

33'33"

33'33"

33'33"

33'33"

33'33"

33'33"

33'33"

33'33"

33'33"

33'33"

33'33"

33'33"

33'33"

33'33"

33'33"

33'33"

33'33"

33'33"

33'33"

33'33"

33'33"

33'33"

33'33"

33'33"

33'33"

33'33"

33'33"

33'33"

33'33"

33'33"

33'33"

33'33"

33'33"

33'33"

33'33"

33'33"

33'33"

33'33"

33'33"

33'33"

33'33"

33'33"

33'33"

33'33"

33'33"

33'33"

33'33"

33'33"

33'33"

33'33"

33'33"

33'33"

33'33"

33'33"

33'33"

33'33"

33'33"

33'33"

33'33"

33'33"

33'33"

33'33"

33'33"

33'33"

33'33"

33'33"

33'33"

33'33"

33'33"

33'33"

33'33"

33'33"

33'33"

33'33"

33'33"

33'33"

33'33"