

5

Transfer Page 614-180

THE DAV. COMM. SCHOOL DIST.

4-25-69

DAVENPORT COMM. SCHOOL DIST.

2-4-71

19

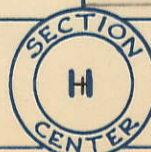
1/4 SECTION LINE

23

CORP. LIMITS JAN. 22, 1958

220'

220'



33'33"

53 RD.

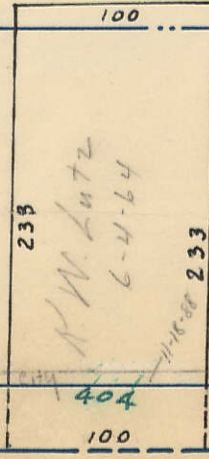
1/4 SECTION LINE

P-II

11

STREET

33'33"



818.79

304