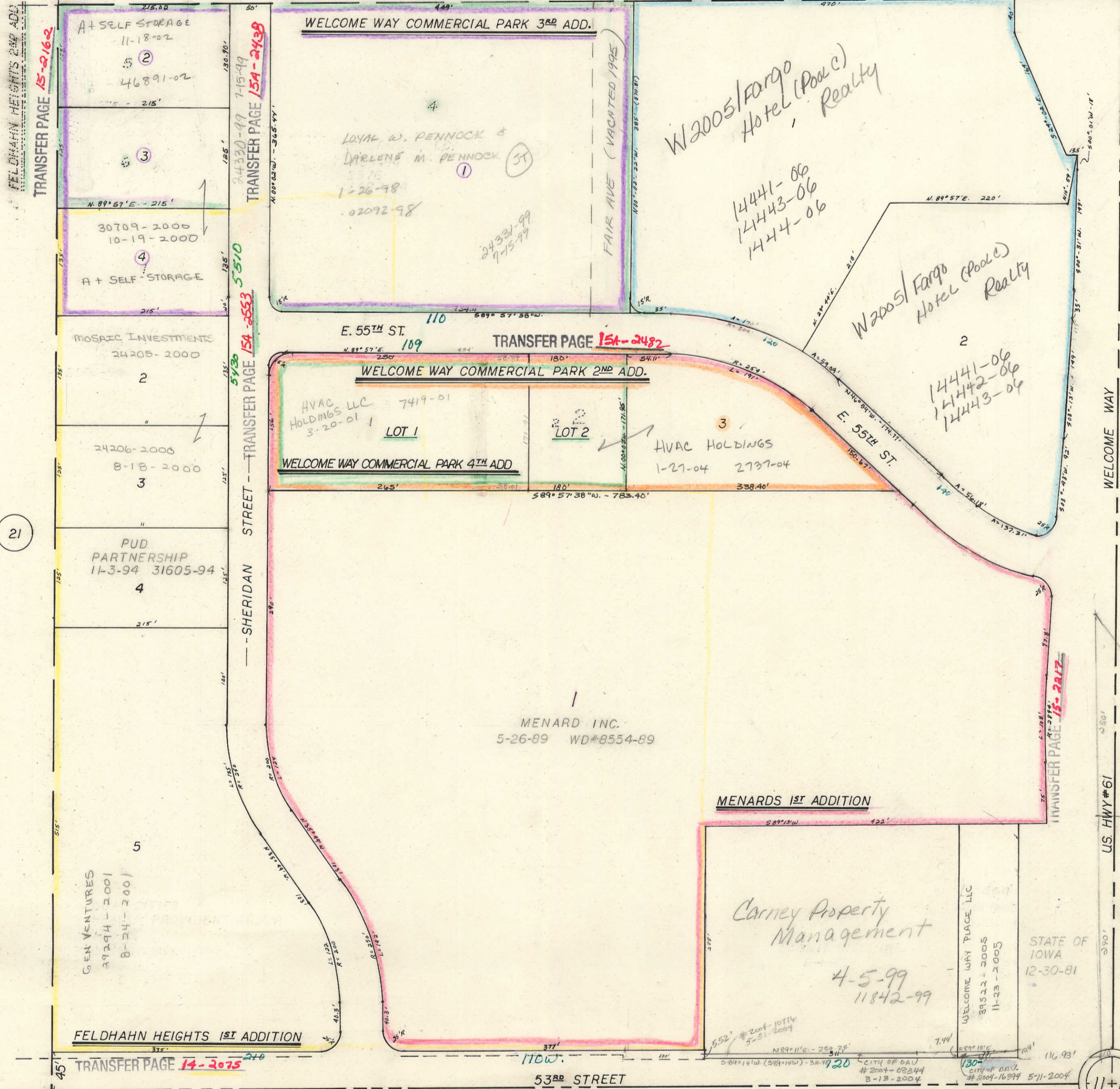


TRANSFER PAGE **154-2352**
WELCOME WAY COMMERCIAL PARK

*Blanks to:
Sheridan, LC
10-20-95
25916-95*



TRANSFER PAGE **15-9162**
FELDHAWN HEIGHTS 2ND ADD

21

A+ SELF STORAGE
11-18-02
②
46891-02
③
30709-2000
10-19-2000
④
A+ SELF STORAGE
215'

MOSAIC INVESTMENTS
24205-2000
2
24206-2000
8-18-2000
3
PUD PARTNERSHIP
11-3-94 31605-94
4

GEN VENTURES
89294-2001
8-24-2001
5

WELCOME WAY COMMERCIAL PARK 3RD ADD.
LOYAL W. PENNOCK &
DARLENE M. PENNOCK
①
1-26-98
②092-98
③
24331-99
9-15-99
FAIR AVE (VACATED 1995)

TRANSFER PAGE **154-2482**
WELCOME WAY COMMERCIAL PARK 2ND ADD.
HVAC HOLDINGS LLC
7419-01
3-20-01
LOT 1
LOT 2
WELCOME WAY COMMERCIAL PARK 4TH ADD
HVAC HOLDINGS
1-27-04 2737-04
3

MENARD INC.
5-26-89 WD#8554-89

W2005/FARGO
HOTEL (POOL)
REALTY
14441-06
14443-06
1444-06
W2005/FARGO
HOTEL (POOL)
REALTY
2
14441-06
14442-06
14443-06
E. 55TH ST.

MENARDS 1ST ADDITION
Carney Property
Management
4-5-99
11842-99
WELCOME WAY PLACE LLC
89522-2005
11-23-2005
STATE OF IOWA
12-30-81

TRANSFER PAGE **14-2075**
FELDHAWN HEIGHTS 1ST ADDITION

53RD STREET

TRANSFER PAGE **15-2817**
US HWY #61
STATE OF IOWA (53RD)
325.11
589°E - 1610
183.11
NANCY E. JANDT
"COUNTRY KITCHEN"
34171-2005
10-11-2005
(CONT)
161.2
150'
STATE OF IOWA
390'
116.93'
110.93'
CITY OF DAV
#2004-08244
3-13-2004
CITY OF DAV
#2004-16294
5-11-2004

X-12

17

11+12

P-11

12