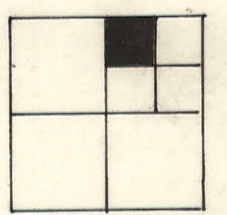
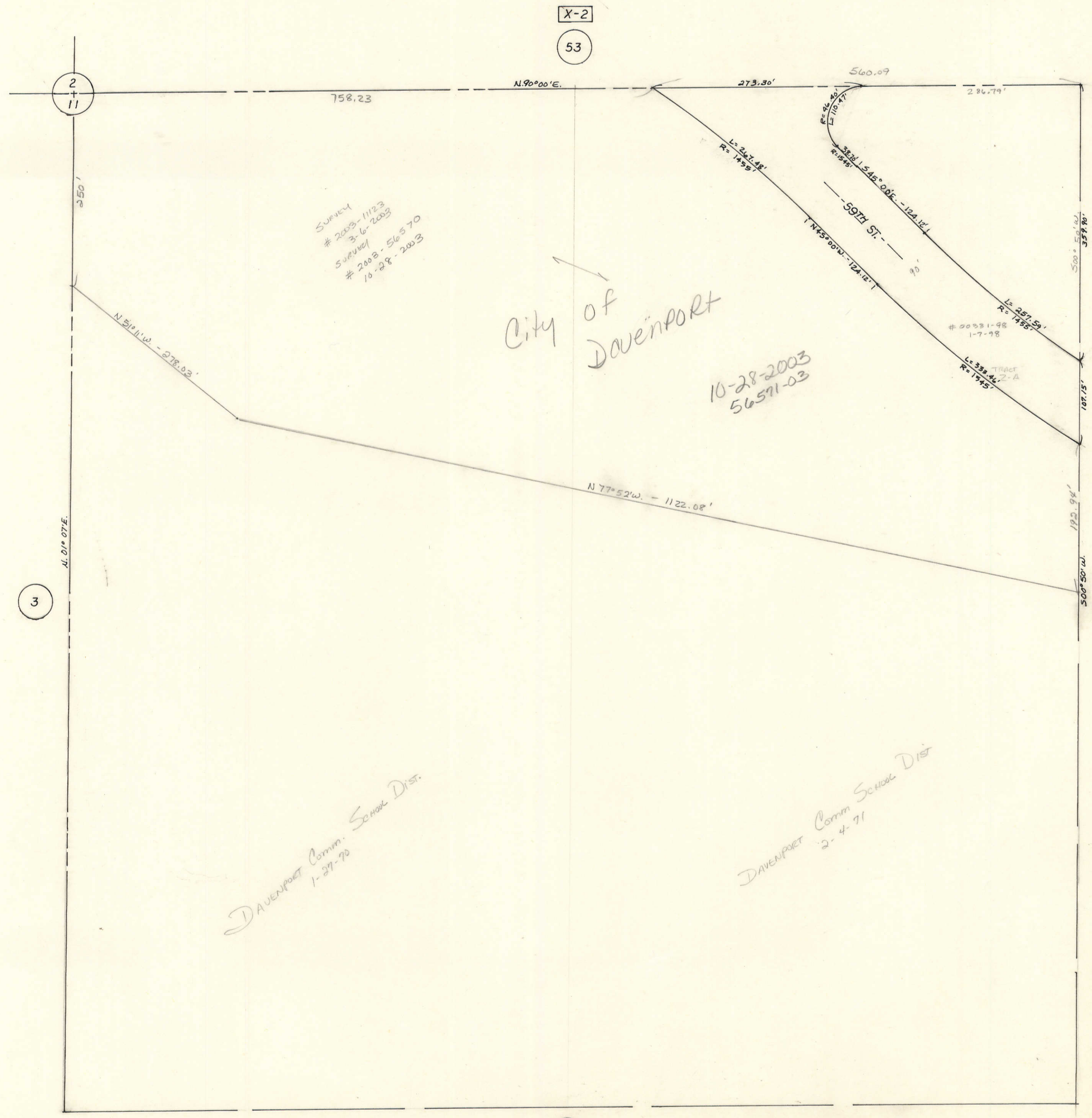


TRANSFER PAGE 605-180



X-2

53

2
11

3

7

21

SURVEY
2003-1123
3-6-2003
SURVEY
2003-56570
10-28-2003

City of Davenport

10-28-2003
56571-03

DAVENPORT Comm. School Dist.
1-27-70

DAVENPORT Comm School Dist
2-4-71

N. 01° 07' E.

250'

N. 51° 11' W. - 278.03'

N. 90° 00' E.

273.30'

560.09

286.79'

500.50' W.
357.80'

107.15'

192.94'

500.50' W.

L=267.48'
R=1755'

L=110.47'
R=1755'

S. 45° 00' E. - 124.12'
N. 45° 00' W. - 124.12'

2003-1-98
1-7-98

L=338.46'
R=1755'

L=257.59'
R=1755'

TRACT
2-A