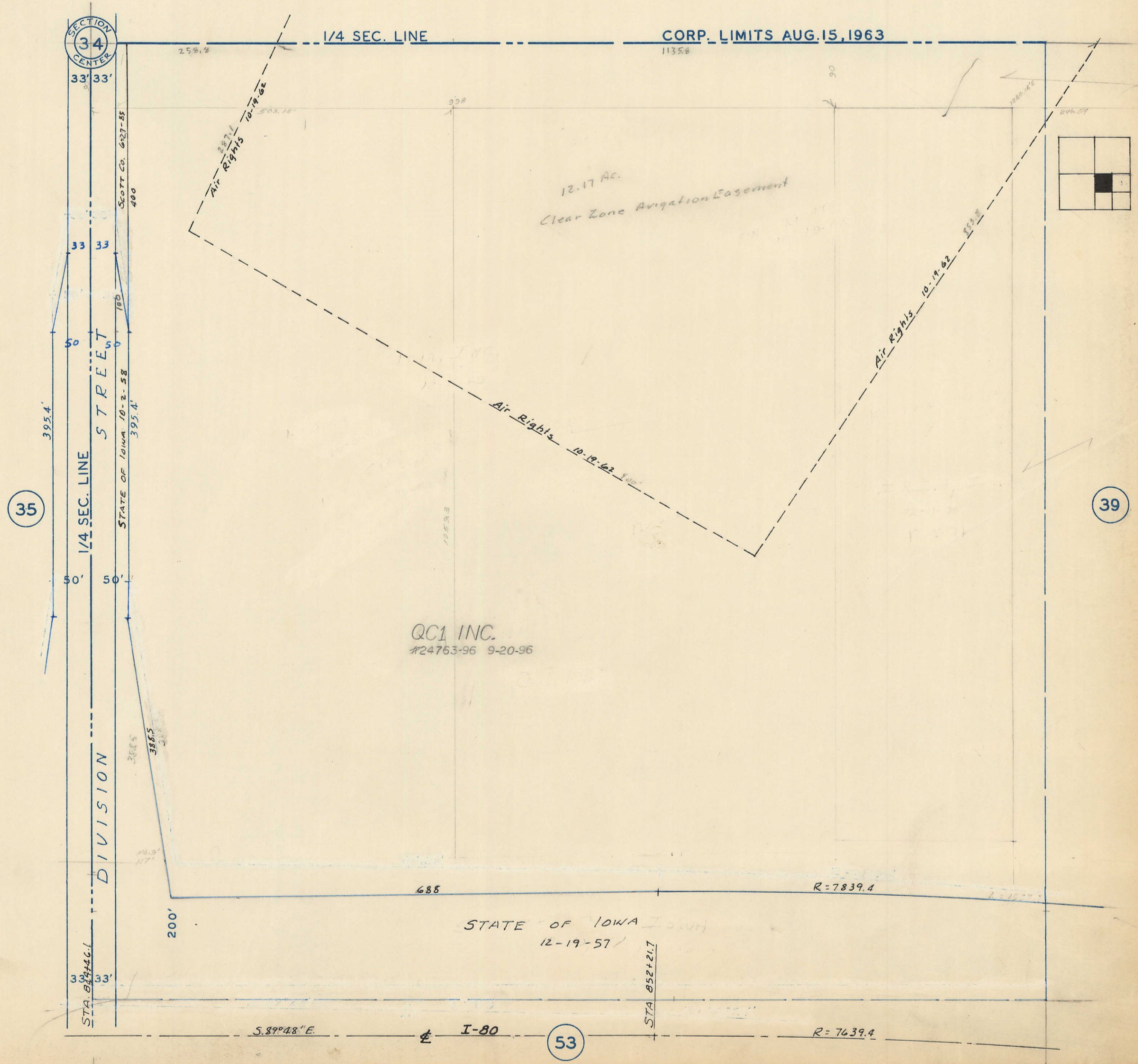


MUNICIPAL AIRPORT

VOL. X-1, PG. 'A'

TRANSFER PAGE 81d-458



SECTION 34 CENTER

1/4 SEC. LINE

CORP. LIMITS AUG. 15, 1963

33' 33'

SCOTT CO. 627-55 400

33 33

STREET

STATE OF IOWA 10-2-58 395.4'

35

1/4 SEC. LINE

50'

DIVISION

33' 33'

STA 0+00+00

388.5

116.9'

200'

QC1 INC. #24763-96 9-20-96

STATE OF IOWA 12-19-57

688

R=7839.4

S. 89° 48' E.

I-80

53

STA 0+52+21.7

R=7639.4

39

