

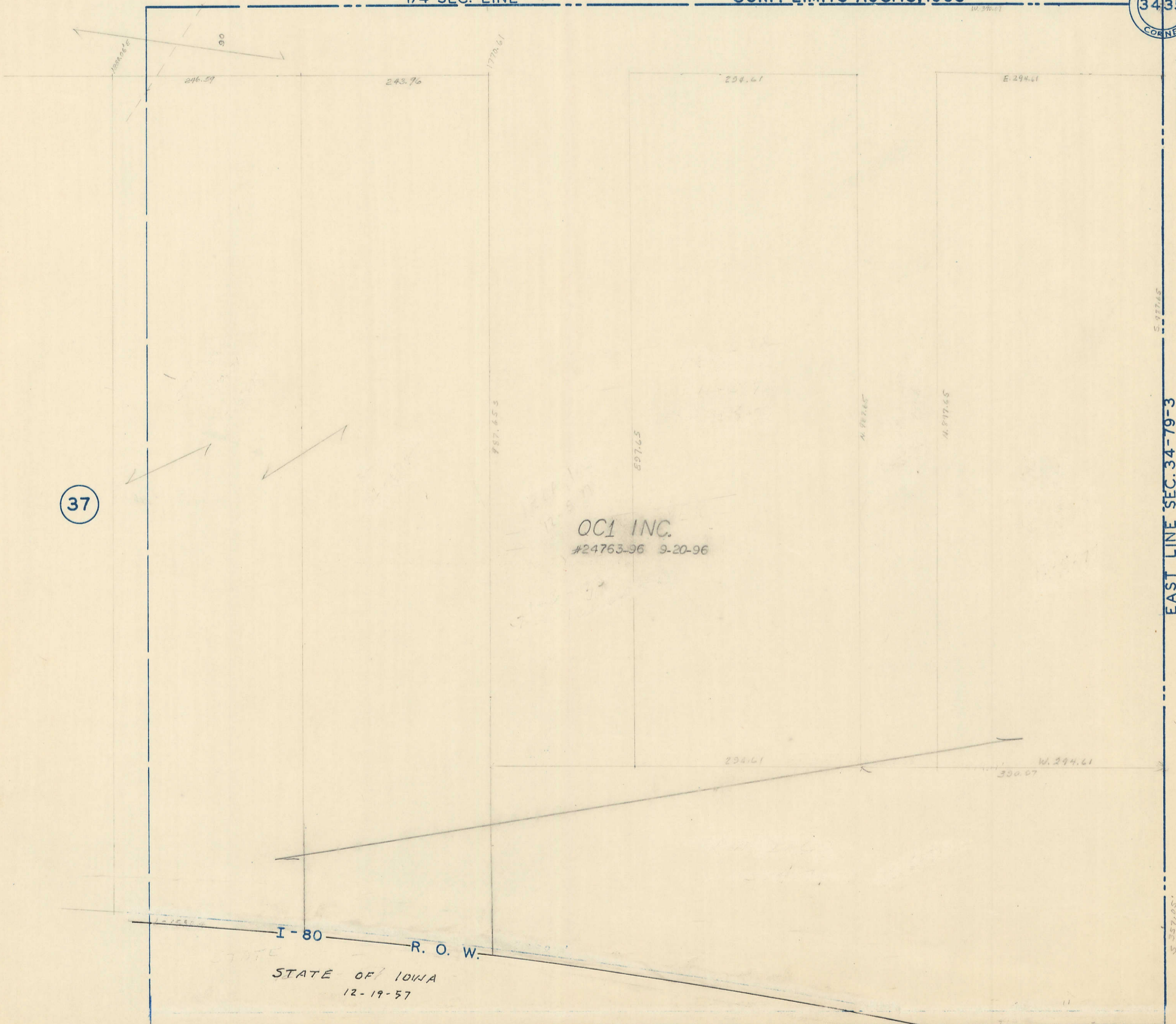
MUNICIPAL AIRPORT

VOL. X-1, PG. 'A'

TRANSFER PAGE 821-458

1/4 SEC. LINE

CORP. LIMITS AUG. 15, 1963



37

OCI INC.  
#24763-96 9-20-96

X-35

33

EAST LINE SEC. 34-79-3

I-80 R.O.W.

STATE OF IOWA  
12-19-57

55