

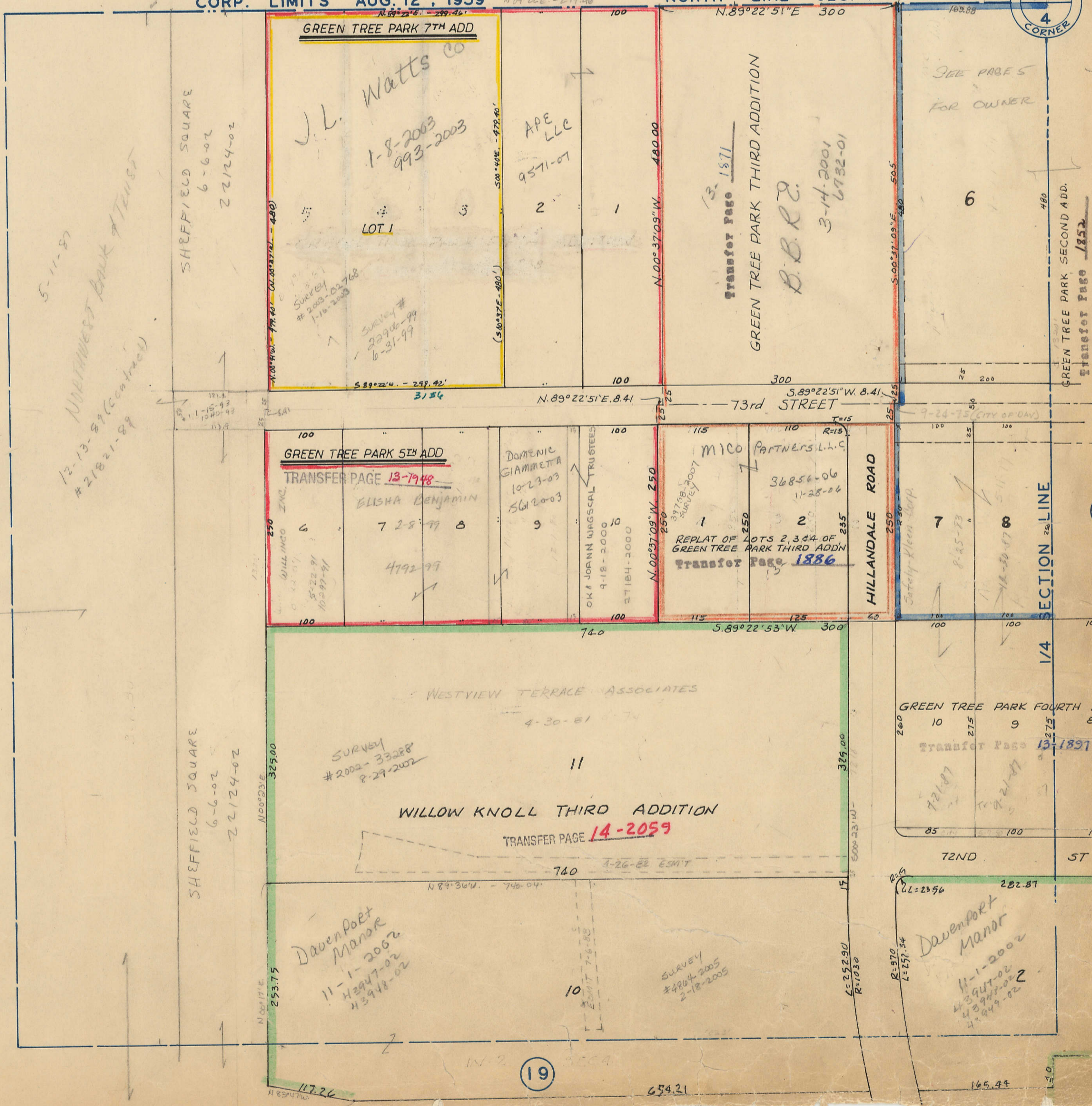
Transfer Page 6Ld-173

TRANSFER PAGE 15A-2492

CORP. LIMITS AUG. 12, 1959

NORTH LINE SEC. 4-78-3

1/4 SECTION  
33  
4  
CORNER



5-11-87  
NORTHWEST BANK TRUST  
# 21821-89 (Contract)

SHEFFIELD SQUARE  
6-6-02  
22124-02

GREEN TREE PARK 7TH ADD

J.L. Watts CO  
1-8-2003  
993-2003  
LOT 1  
Survey # 22906-99  
6-31-99

APE LLC  
9571-07

GREEN TREE PARK THIRD ADDITION  
Transfer Page 1571

B.B.R.R.

3-14-2001  
6732-01

SEE PAGES FOR OWNER

GREEN TREE PARK SECOND ADD.  
Transfer Page 1852

GREEN TREE PARK 5TH ADD

TRANSFER PAGE 13-1948  
ELISHA BENJAMIN  
7-28-99

DOMINIC GIAMMETTA  
10-23-03  
5612-03

MICO PARTNERS L.L.C.  
36856-06  
11-28-04  
REPLAT OF LOTS 2, 3, 4, 4 OF GREEN TREE PARK THIRD ADDN  
Transfer Page 1886

HILLENDALE ROAD

SECTION LINE

WESTVIEW TERRACE ASSOCIATES

SURVEY # 2002-33288  
8-29-2002

WILLOW KNOLL THIRD ADDITION

TRANSFER PAGE 14-2059

GREEN TREE PARK FOURTH ADD.

Transfer Page 13-1891

Davenport Manor  
11-1-2002  
43947-02  
43948-02

SURVEY # 4204-2005  
2-18-2005

Davenport Manor  
11-1-2002  
43947-02  
43948-02

1

5

19

117.26

654.21

165.44

17.5